

SURGEOGUIDE II

GammaProbe

Radioguided Surgery has Proven to be a Feasible and Promising Alternative for Management of Oncological Patients. This Technique is Useful in Cases where the Suspect Lesions are Difficult to Identify Intraoperatively due to Their Dimensions or Anatomical Location, Enabling More Conservative Excisions and Reducing the Morbidity Related to Surgery. So Some of the Applications of GammaProbe are:



- *Sentinel Lymph Node (SLN) Mapping.*
- *Identification, Localization & Detection of SLN.*
- *Sentinel Lymph Node Biopsy (SLNB).*

Advantages of SURGEOGUIDE II

- 3 Types of Probes, 2 Probes Simultaneously
- Internal Collimator and Detector
- Digital Easy to Read Display
- Sound Modulated with Count Rate (FM/Beep Sound)
- High Accuracy
- High Sensitivity
- High Shielding Efficiency
- Optimized Energy Resolution, Spatial & Angular resolution
- Optimized to Facilitate Precise Localization in a Broad Range of Anatomy
- Easy to Use
- ISO, CE and Other Production Licenses



Parto Negar Persia Co.

Pioneer in Healthcare Technology

📍 **Central Office:**
Unit 1, NO. 8, Hamedan Alley, North
Kargar St. Tehran, Iran.

☎ +98 21 - 66580959 - 66581159
+98 21 - 40660358 - 40660359

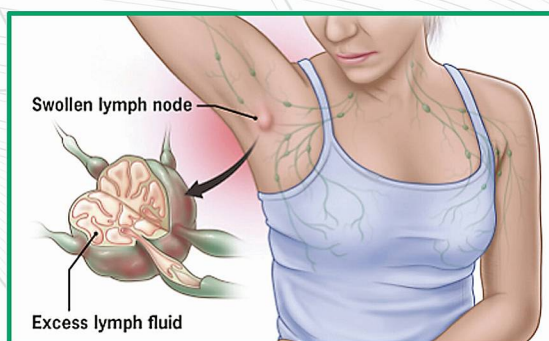
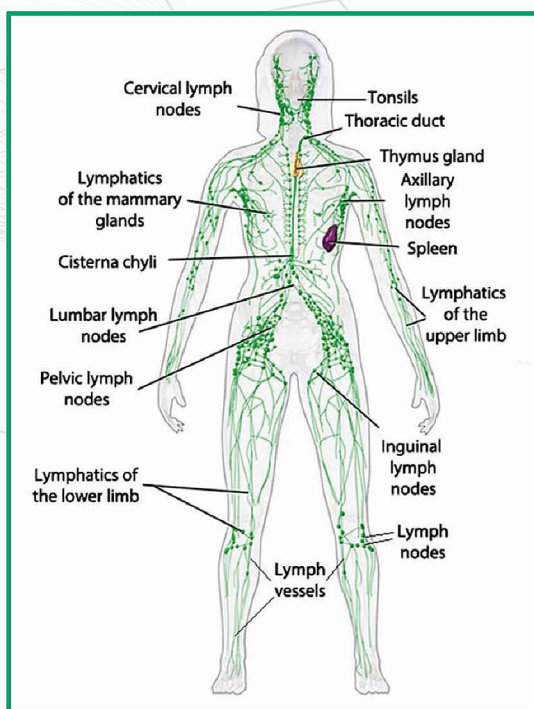


📍 **Factory:**
No. 15, Derakhshan Alley, Km.19 Shahid
Lashgari Highway, Tehran, Iran.

☎ +98 21 - 44992824 - 44989380
+98 21 - 44989771 - 44993827

Clinical Applications:

- Breast Cancer
- Gynecological Cancers (Cervical, Ovarian, Uterine, Vaginal and Vulvar)
- Melanoma and Other Types of Skin Tumors
- Gastrointestinal Tumors
- Head & Neck
- Endocrine Cancers (Thyroid, Parathyroid)
- Urology Cancers (Prostate, Bladder, Testicular, Kidney and Penile)
- Bone Tumour (Such as Osteoid Osteoma)
- Nuclear Medicine (Localization of Gamma Labeled Areas)



GammaProbe Specifications: (Based-on NEMA-NU3 Standard Test)

- Probe Length: 21 cm
- Three Type of Probes: Small, Large, Endoscopic
- Tip Diameter: 16 mm (Large), 11 mm (Small), 10 mm (Endoscopic)
- Tungsten Pinhole Collimator Integrated in the Probe
- Probe Weight: 185 gr
- Sensitivity: >2 Kcps/MBq (Large), >700 cps/MBq (Small and Endoscopic) @ 3 cm
- Shielding Efficiency: >99 % for Tc-99m
- Energy Resolution: <11% FWHM for Tc-99m
- Angular Resolution: Between 65° to 75°
- Spatial Resolution: <45 mm FWHM at 3 cm Distance (For Large Probe)
- Energy Range: 60 keV (Am-241) to 364 keV (I-131) "Optimized for 140 keV Tc-99"



Parto Negar Persia Co.

Pioneer in Healthcare Technology