

# Epifluorescence illuminator module

Model: GA-EI 01



خیابان حبیب اللہی، خیابان شہید قاسمی، خیابان گلستان  
بن بست گل، پلاک ۴، زنگ ۵، طبقہ دوم

۰۲۱-۶۶۰۳۳۱۸۴

۱۴۵۹۹۷۳۷۶۱

[www.geneafarin.com](http://www.geneafarin.com)

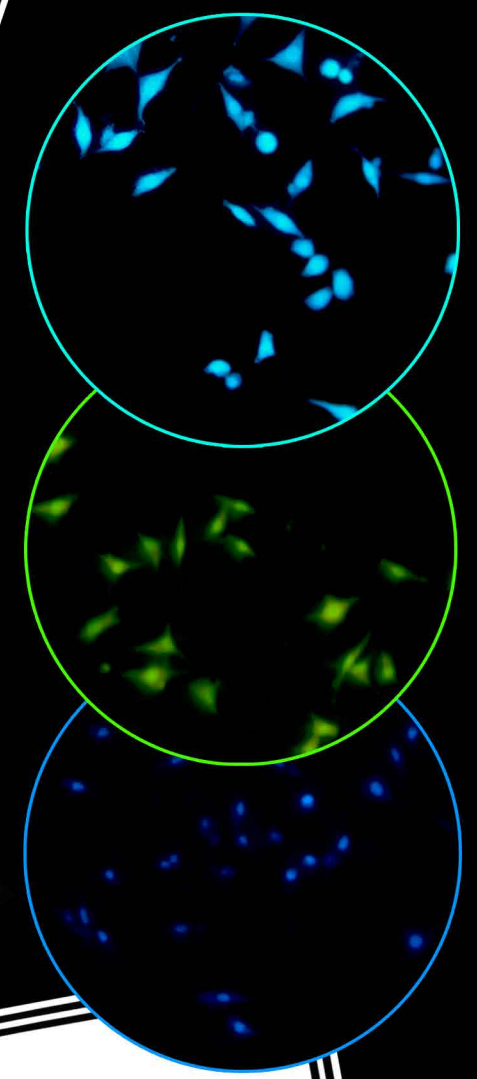
[zistageneafarin@gmail.com](mailto:zistageneafarin@gmail.com)





# Filter sets

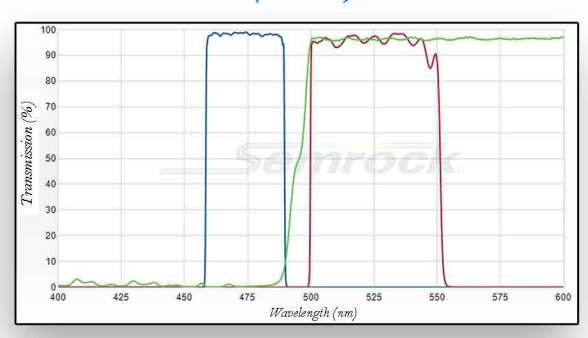
Captured images using epifluorescence illuminator module



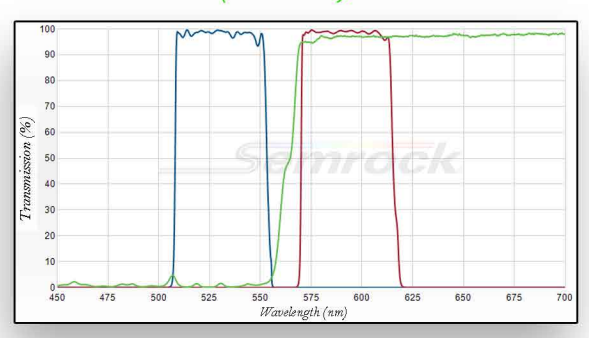
# Specifications

Unit name	Epifluorescence illuminator module
Model	GA-EI 01
Description	Fluorescence module with 5-position filterwheel and HBO mercury lamp
Fluorescence light source	100 W HBO mercury lamp and housing
Fluorescence lamp house	Adjustable
Filter sets	4-position fluorescence filter sets
	Excitation Filter types: B, G, V, UV
	Customize filter sets available upon request
Wavelengths of filter sets	G: Ex 510-550 nm, Em 590LP ( 593/40 BP), DM 570
	B: Ex 460-490 nm, Em 520LP ( 474/27 BP), DM 500
	V: Ex 380-440 nm, Em 470LP ( 483/32 BP), DM 455
	UV: Ex 350-400 nm, Em 420LP ( 447/60 BP), DM 409
Filter sets switch type	User-changeable module (manual)
Diaphragm	Aperture and field diaphragms (manual)
Power supply	Input AC100 -240 V, 50/60 Hz, output 20 V DC 100 W
Dimensions	420 mm × 180 mm × 63 mm
Fluorescence module weight	4 kg
Fluorescence module color	White

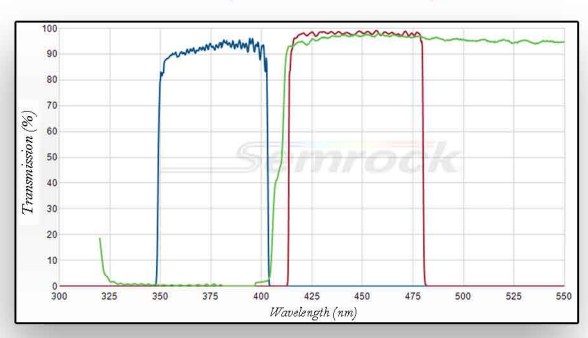
B (Blue)



G (Green)



UV (Ultraviolet)



V (Violet)

