



Saba Plant 110-B10

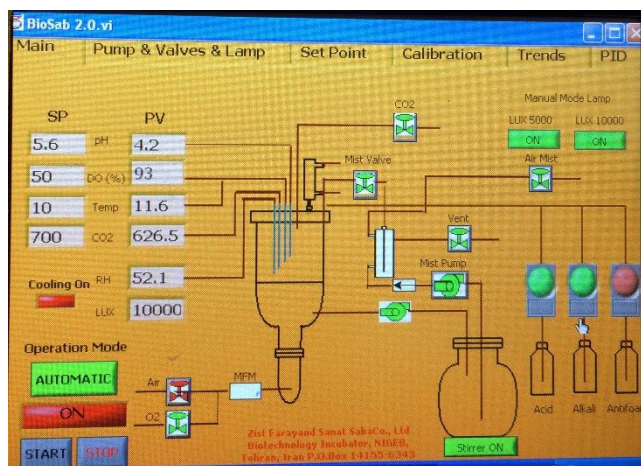
Saba Plant 110-B10 is designed for cultivation of phototrophic organisms such as plants, mosses, microalgae, cyanobacteria.



Features:

| | | |
|----------------------------|--|--|
| Vessel volume | Total capacity (L) | 10 |
| | Working volume (L) | 2-7.5 |
| Vessel construction | Aspect ratio (H:D) | 2.5 |
| | Fabrication | Glass |
| Controllers | Control station | Temperature, pH, DO, antifoam |
| | Optional controllers | Mass flow Controllers, RH, CO ₂ |
| | Touch screen interface/ Display | |
| light | Adjust the light intensity in three modes 0, 5000, 10000 lux | |
| Temperature | Sterilization | Autoclavable |
| | Range and control | Between 10-45 °C ±0.5 |
| Exhaust | Condenser and filter | Stainless steel condenser and filter 0.2 µm |
| Aeration | Gas system | Rotameter for air and O ₂ , solenoid valve for O ₂ |
| | Gas inlet | Air and oxygen |
| pH | Control range | 2-12, ±0.1 |
| | Sensor | Hamilton |
| DO | Sensor | Hamilton |
| | Range and control | 0-100% |
| Antifoam | Foam/ level | |
| Pumps | 3 peristaltic pumps (acid, base, antifoam) | |

| | | |
|---|------------------------|--|
| Utility requirements and connections | Process air and oxygen | Air and O ₂ ports |
| | Electric service | 220V, 50/60Hz |
| Dimension | (L*W*H) cm | Cabin: (120*85*175) |
| Biosab1 software | Control | PID for temperature, pH, DO |
| | Data logger | Yes |
| | Record | Record and send data to other software |
| | Output data | Graph ,table |
| | Flexibility | Yes |
| | Pump and valve | Manual and automatic |
| Communication port | USB | |
| Calibration | Electrodes | Temperature, pH, DO |



Contact details:

Address: Zist Farayand Sanat Saba (ZFSS) Co, Ltd. NIGEB, Shahrake Pazhohesh, 15th km of tehran-karaj highway, Tehran, Iran.

- ♥ Tel Fax: +982144787330
- ♥ Wbsite: www.zfs-saba.com