

RasaAndishan Moj Pardaz

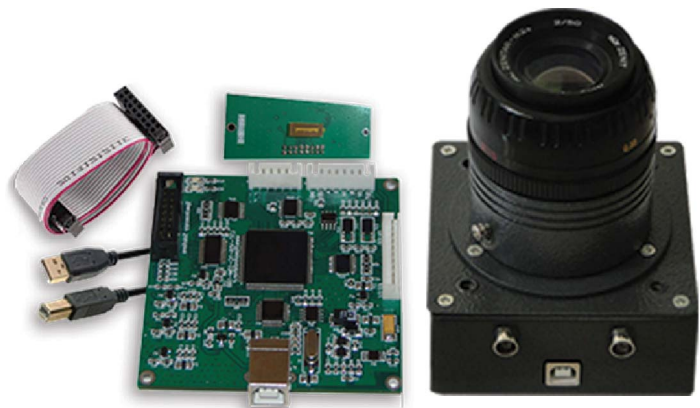
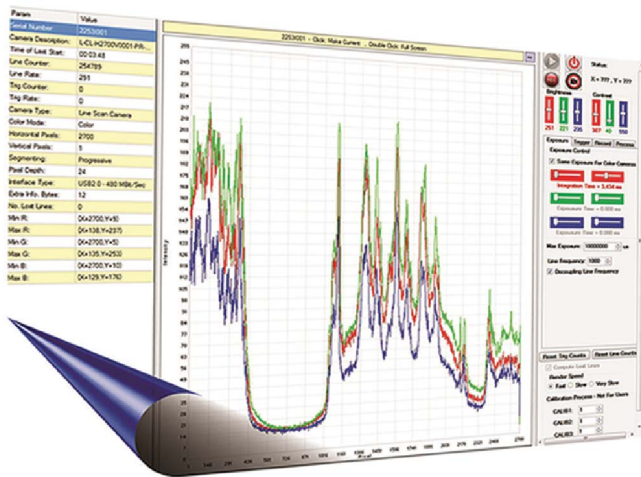
(دانش بنیان)

رسا اندیشان موج پرداز



طراح و سازنده انواع آشکارسازهای خطی و دوربین های تصویربرداری

- Robust & Reliable Hardware & Software Architecture
- Multi Interface Connectivity (USB2.0,USB3.0,Ethernet)
- Cross Platform - Linux & windows Application Support
- Plugin Based API and Sophisticated FlowGraph Structure
- VariousSDK(C#,C++,MATLAB,VB.Net,Python,LabVIEW)Included



S - A - K Suffix Cameras are Board Level !
I - P Suffix Cameras are Boxed !

RA-LSC-2253



Overview

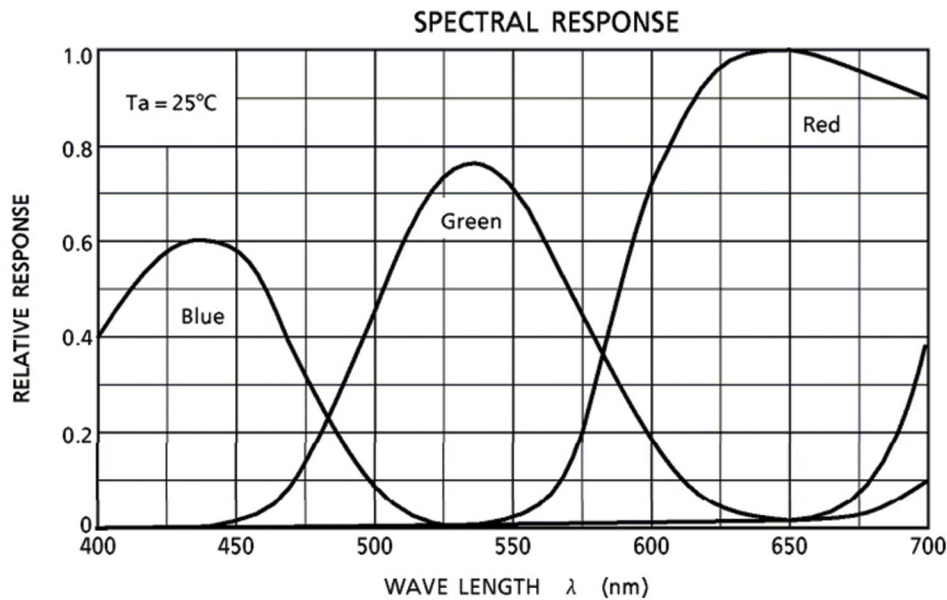
RA-LSC-2253 is a USB2.0 Bus Powered Line Scan Camera that incorporates a 3 x 2700 Pixels CCD array with Pixel Size of 10.5 μm by 10.5 μm on 10.5 μm center. It is capable of detecting light in the 350 - 1100 nm range. The Line rate of This cost effective color line scan camera is up to 1799 Hz. This camera Supports External Triggering at rate of up to 899 Hz.

GUI Features

Operates up to 10 Cameras Simultaneously without loss of any data
Cross Platform Software with Auto-Detection of Compatible Cameras
Smoothing, FPN Correction, PRNU Correction, Shading Correction, Background Subtract
Best Responsiveness by Separate Threads of Data Acquisition, Processing and Monitoring
Zooming, Panning, Cursor Definition and OverLayer Mode in Line Scope

Application

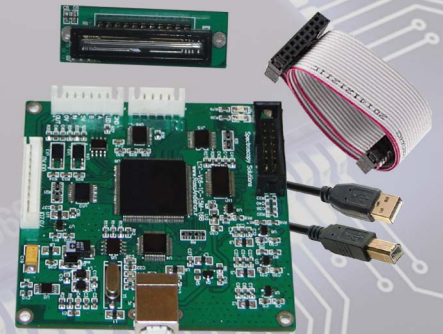
RA-LSC-2253 is Designed for Applications in Optics, Imaging, Biology, Industrial Process Control and General Laboratory Use.



Specification

Sensor Spec	
Sensor Type	Color CCD Linear Image Sensor
Spectral Response	350-1100 nm
CCD Pixel Size	10.5 μm x 10.5 μm
Pixel Height	10.5 μm
Pixel Width	10.5 μm
Effective Pixels	2700 x 3
Effective Length	2700 x 10.5 μm = 28.35 mm
Max Pixel Frequency	5 MHz
Max Line Rate	1799 Hz @ Free Running Mode
Min Exposure Time	565 μs
Max Exposure Time	71 Min
Exposure Resolution	1 μs
Pixel Color Depth	16 bit - 65536 Counts
Brightness Coefficient	-/+ 300 mV - 512 Analog Steps
Contrast Coefficient	64V/V - 64 Analog Steps
Triggering Spec	
Trigger Signal	TTL 5 V and 3.3 V
Trigger Mode	Free Running, Software Trigger, Hardware Trigger
Hardware Trig Polarity	Rising Edge, Falling Edge, Both Edges, High Level, Low Level
Trigger Factor	0 To 65535
Exposure Mode in Trig	Up to 4 Different Modes
Max Trigger Rate	899 Hz
Min Trigger Pulse Length	33 ns
Trigger Delay	0 to 16 Min - in 1 μs Steps
General Spec	
Interface	High Speed USB 2.0 (480 Mbit/s)
Weight PCB Dimension	42 gr 80 mm x 87 mm x 25 mm
Temperature Range	0 to + 60 ($^{\circ}\text{C}$)

رسا اندیشان موج پرداز (دانش بنیان)



حکیمیه، میدان فجر، خیابان خرم، خیابان سحر، کوچه پگاه ۶، پلاک ۱۱، واحد ۷

www.RasaAndishan.ir Info@RasaAndishan.ir ۰۲۱-۷۷۰۱۳۶۸۷