

# CW High Power Fiber Laser



[WWW.NHSABA.COM](http://WWW.NHSABA.COM)

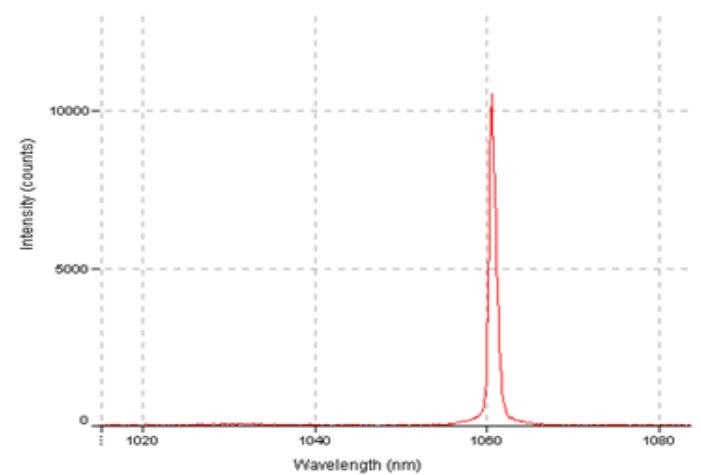
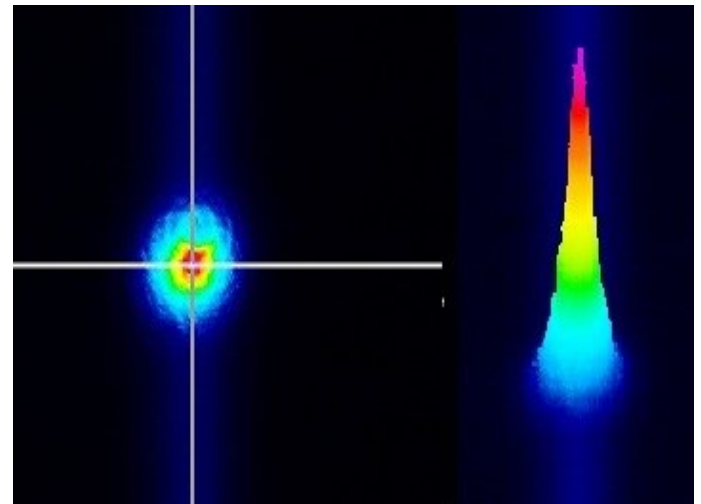
Fax : 031-3392059

Tel : 031-3392060

Laser is provided with either an integrated collimator or a plug-in connector. Circular spots with focuser could be a few microns in diameter, with a long working distance focused onto the work piece. The all-fiber configuration guarantees the robustness of the lasers with monolithic design without any optical parts to align or to stabilize, no need for routine replacement parts or materials, which can operate under high shock, vibration and dust condition. These fiber lasers have a very high reliability, which could not be achieved by other solid state or gas laser systems.

## **Futures:**

- **Up to 510 W output power**
- **1060 to 1100 nm fixed wavelength**
- **> 100,000 hrs pump diodes lifetime**
- **Compact, air cooled package**
- **Maintenance free operation**
- **High wall-plug efficiency**
- **High performance-to-cost ratio**
- **RS232 or USB interface**
- **Custom design flexibility**



## **Applications:**

- **Material processing**
- **Welding**

## مشخصات :

Parameter	Value
Mode of operation	CW
output power	150,300,500 W
Operating Wavelengths	1060-1100nm
Fiber Type	20/400 0.06/0.46, 50/400 NA=0.22*
Output power stability	<1.7 (for 20/400 Double clad fibers)
Linewidth(FWHM)	<1 nm
Modulation Rate	< 1kHz
Rise Time / Fall Time	< 130us
Cooling	water
Operating temperature	12 to +37
Storage temperature	-30 to +70
Output fiber length	Optional(1-10)
Dimension	50x45x17