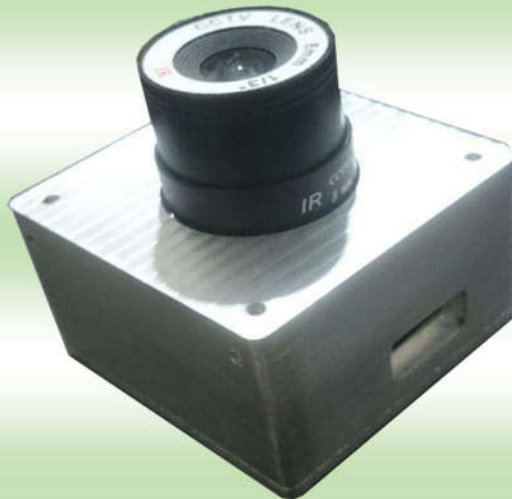
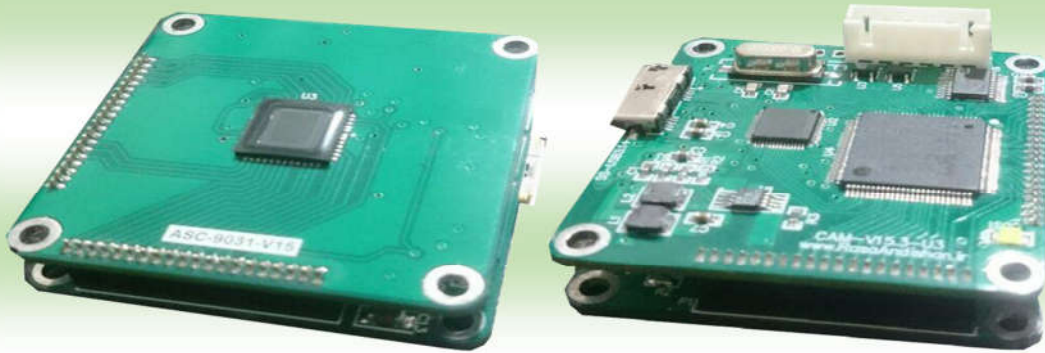


RasaAndishan USB3 Camera

RA-ASC-93111

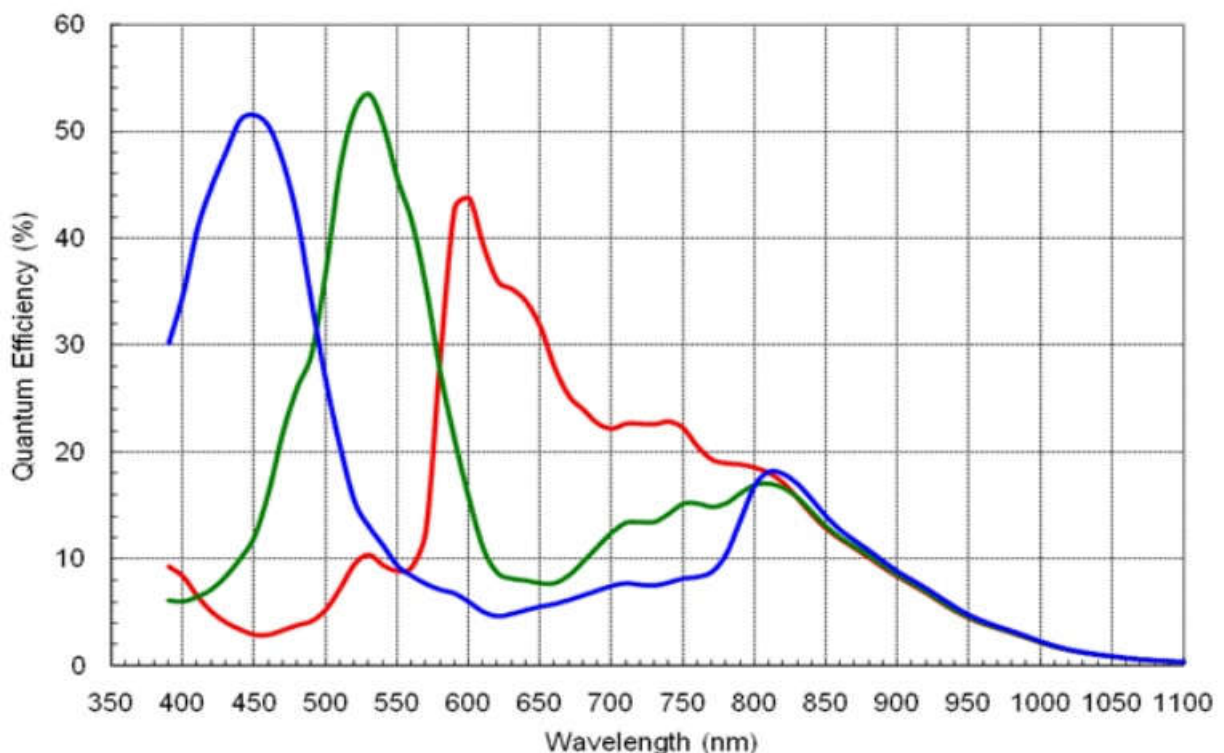


| | | |
|-----------------|----------------------|---------------------------------|
| Overview | Specification | Graphical User Interface |
|-----------------|----------------------|---------------------------------|

Overview

- Input and Output Triggers
- Versatile Software Package (USB Camera) and SDK Package (C/C++, VB, DotNet, Matlab) Included
- USB 2.0 - High Speed Interface
- Powered via USB - External Supply Not Required!

RasaAndishan' RA-LSC-9311I USB3 Area Scan Camera is designed for applications in optics, imaging, biology, and industrial process control. It incorporates an Area Image Sensor with 2592*1944 pixels CMOS array and is capable of detecting light in the 400 - 1000 nm range With scan rates up to 6 scans per second.



Overview**Specification****Graphical User Interface**

Specification

| Sensor Specs | |
|------------------------------|--|
| Sensor Type | CMOS Array |
| Spectral Response | 400-1000 nm |
| CCD Pixel Size | 2.2 μ m x 2.2 μ m |
| Pixel Height | 2.2 μ m |
| Pixel Width | 2.2 μ m |
| Effective Pixels | 2592(H) * 1944(V) – 5MP |
| Effective Length | 7.6mm(H) * 6.2mm(V) |
| Max Pixel Frequency | 30MHz |
| Max Frame Rate | 6 FPS |
| Min Integration Time | 100 μ s |
| Max Integration Time | 1 Sec |
| Integration Time Resolution | 10 μ s |
| Pixel Color Depth | 8 bit – 256 Counts |
| Brightness Coefficient | -/+ 300 mV - 512 Steps |
| Contrast Coefficient | 64V/V - 64 Steps |
| External Triggering | |
| Trigger Signal | TTL 5 V and 3.3 V |
| Trigger Mode | Free Running, Software Trigger, Hardware Trigger |
| Hardware Trigger Polarity | Rising Edge, Falling Edge, Both Edges, High Level, Low Level |
| Trigger Factor | 0 To 65535 |
| Exposure Mode in Ext Trig | Up to 4 Different Modes |
| Trigger Frequency, Scan Rate | Max 6 FPS |
| Trigger Pulse Length | 33 ns |
| Trigger Delay | 0 to 16 Min – in 1 μ s Steps |
| General Specs | |
| Interface | Super-Speed USB 3.0 (5Gbit/s) |
| Dimensions (L x W x H) | 52 mm x 52 mm x 34 mm |
| Weight | 370 g |
| Temperature Range | -30 ~ 70 °C |

Graphical User Interface

Features

- Operates up to 10 Devices Simultaneously
- Auto-Detection of Compatible Devices
- Different Thread for Data Acquisition for Better Responsiveness to User Input
- Extremely power full DLL, easy to use on any platform
- Saving Frames in RAW and Jpeg Formats

Adjustable Parameters / Supported Command

- Integration Time
- Trigger Modes: Free Running, External, Software
- Exposure Mode
- Trigger Delay
- Brightness
- Contrast
- Capture Start/Stop
- Trigger Factor
- Trigger Polarity
- Software Trigger
- Mirroring Image/Flipping Image