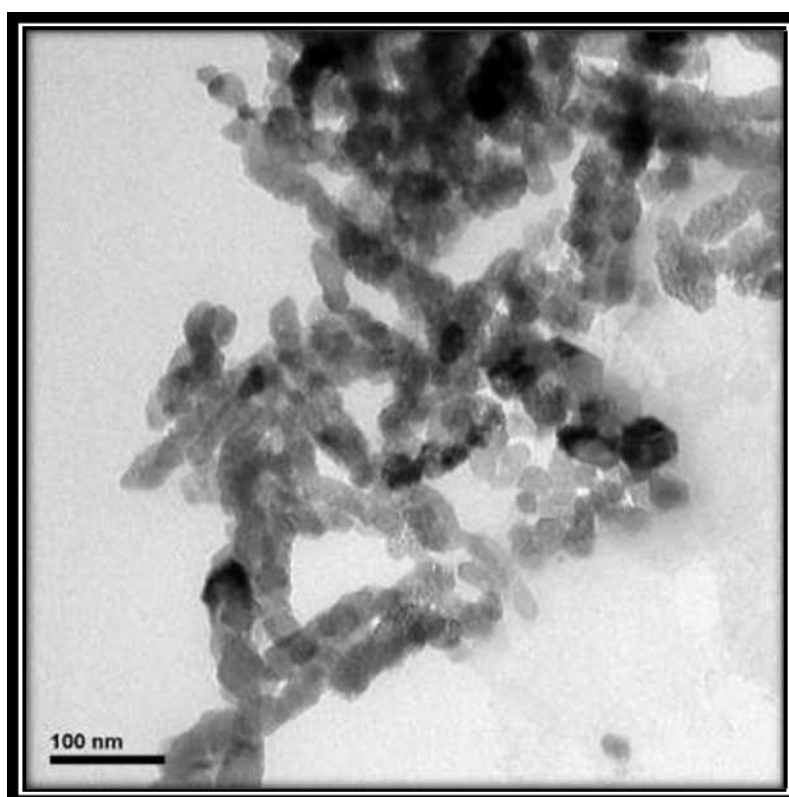


Al_2O_3 Nano particles

Color	purity	ASP (nm)	SSA (m^2/gr)	Crystal phase
White powder	~ 90-99%	20-50	>138	gamma
Density (kg/m^3)	Morphology	pH	Specific heat capacity (J/Kg-K)	
3890	Nearly spherical	5.5-6	880	

TEM



XRD

