



نوران حسگر صبا

Nouran Heshgare Saba

سهامی خاص

# لیزر فیبری فمتوثانیه

## Corewave-EDFL1600



[www.sabaphotonics.ir](http://www.sabaphotonics.ir)

Tel : 03133932060

Fax : 03133932059



**نوران حسگر صبا**

**Nouran Hesgare Saba**

سهامی خاص

CoreWave's EDFL1600 is an innovative and competing product which provides the customer with ultra-short output pulses as short as 90 fs and output average powers up to 2 W at the central wavelength of 1600 nm. This robust and compact femtosecond fiber laser system is a powerful laser machine which integrates the latest achievements in femtosecond technology into a commercial product. From material processing to spectroscopy and THz physics, this effective solution addresses a wide range of demand. The laser is maintenance-free and ready to use at the press of a single button.

#### Features

Up to 2 W Output Average Power

90 fs Pulse Width

MOPA architecture

Compact and Low Cost

Industrial Performance

Maintenance-Free

Carry a 2-year Guarantee

#### Applications

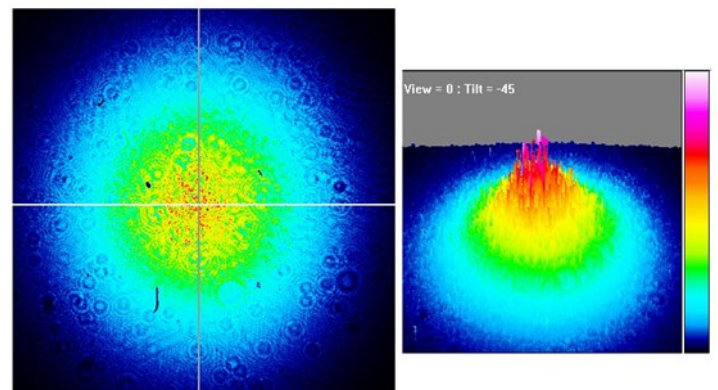
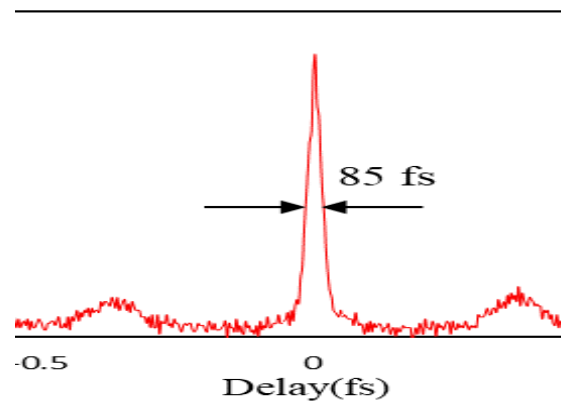
Supercontinuum Generation

Terahertz Generation

Spectroscopy

Material Processing

#### *Autocorrelation Trace*



[www.sabaphotonics.ir](http://www.sabaphotonics.ir)

Tel : 03133932060

Fax : 03133932059



**نوران حسگر صبا**

**Nouran Hesgare Saba**

سهامی خاص

## Technical Specification :

Central Wavelength	1600 nm
Output Line width (FWHM)	85 nm
Output Average Power	$\geq 2$ W
Output Pulse Energy	$\geq 38$ nj
Output Pulse Width	$\leq 90$ fs
Repetition Rate	52 MHz ( Under the customer request )
Polarization	Non polarized ( Under the customer request )
Beam Quality (M2)	$\leq 1.5$
Operating Temperature	20 ~ 35 (C°)
Cooling	Air-cooled
Output Fiber	70 cm Long SM Fiber
Operating Voltage	220 V @ 50 Hz
Power Consumption	$\leq 20$ W
Dimensions	350×315×90 mm
Dimension (mm)	600 L *400 W

[www.sabaphotonics.ir](http://www.sabaphotonics.ir)

Tel : 03133932060

Fax : 03133932059