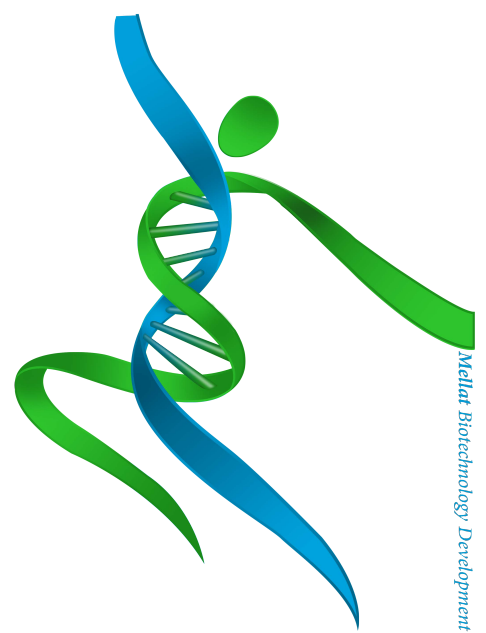


## Product datasheet

# Goat Anti-Human IgG H&L (HRP) MB6858

1 Image



### Overview

<b>Product name</b>	Goat Anti-Human IgG H&L (HRP)
<b>Host species</b>	Goat(Saanen)
<b>Target species</b>	Human
<b>Tested applications</b>	<b>Suitable for:</b> IHC-P, WB, ELISA, Immunomicroscopy, Dot blot, ICC, IHC-Fr
<b>Immunogen</b>	Human IgG, whole molecule
<b>Conjugation</b>	HRP

### Properties

<b>Form</b>	Liquid
<b>Storage instructions</b>	Shipped at 4°C. Store at -20°C. Avoid freeze / thaw cycle. Please see notes section. Store In the Dark.
<b>Storage buffer</b>	pH: 7.4 Preservative: Stabilizer Constituents: PBS 0.01mM
<b>Purity</b>	Immunogen affinity purified
<b>Purification notes</b>	This product was prepared from monospecific antiserum by immunoaffinity chromatography using IgG(Human) coupled to agarose beads.
<b>Conjugation notes</b>	Horseradish Peroxidase (HRP)
<b>Clonality</b>	Polyclonal
<b>Isotype</b>	IgG
<b>General notes</b>	<p>HRP conjugated anti-Human secondary antibody optimized for western blot and immunohistochemistry. Some customers reported seeing brown precipitates in the vials. The brown precipitates are very common with HRP conjugated antibodies; we suggest vortexing the vial and using this antibody as normal. Our customer's feedback says the antibody worked great. If in case the antibody fails to give results then please contact our Scientific Support team for assistance.</p> <p>For extended storage aliquot contents and freeze at -20° C or below. Centrifuge product if not completely clear after standing at room temperature. This product is stable for several weeks at 4° C as an undiluted liquid. Dilute only prior to immediate use.</p>

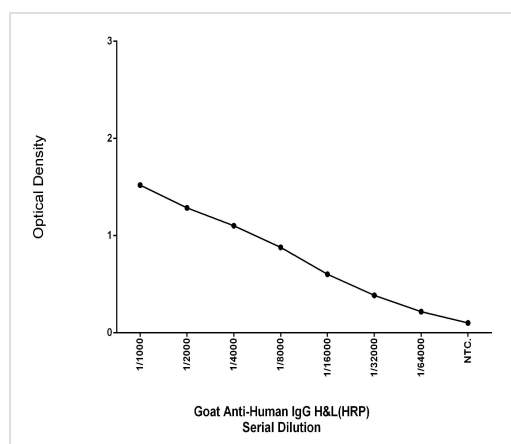
## Applications

Our [MBpromise guarantee](#) covers the use of MB) + ( + in the following tested applications.

The application notes include recommended starting dilutions; optimal dilutions/concentrations should be determined by the end user.

Application	Pzreviews	Notes
IHC-P		Use at an assay dependent concentration.
WB		Use at an assay dependent concentration.
ELISA		1/1000 - 1/2000.
Immunomicroscopy		Use at an assay dependent concentration.
Dot blot		Use at an assay dependent concentration.
ICC		Use at an assay dependent concentration.
IHC-Fr		Use at an assay dependent concentration.

## Images



MB6858 was tested by direct ELISA, where wells were coated with Human IgG (10µg/ml) for overnight(12hours), followed by a 2 hour blocking step (2.5% Skim Milk). pz5747 was added with serially diluted (1:1000 – 1:64000) for 2 hours and detected by -HRP. Signal was developed by TMB substrate.

ELISA - Goat Anti-P<sup>z</sup> { æ } IgG H&L (HRP) (MB6858)

**Please note:** All products are "FOR RESEARCH USE ONLY. NOT FOR USE IN DIAGNOSTIC PROCEDURES"

## **Our MBpromise to you: Quality guaranteed and expert technical support**

---

- Replacement or refund for products not performing as stated on the datasheet
- Valid for 12 months from date of delivery
- Response to your inquiry within 24 hours
  
- We provide support in Chinese, English, Farsi and Arabic Extensive multi-media technical resources to help you
- We investigate all quality concerns to ensure our products perform to the highest standards
- 

If the product does not perform as described on this datasheet, we will offer a refund or replacement. For full details of the MBpromise, please visit <http://mellat.shop> or contact our technical team.

## **Terms and conditions**

---

- Guarantee only valid for products bought direct from MELLAT or one of our authorized distributors



