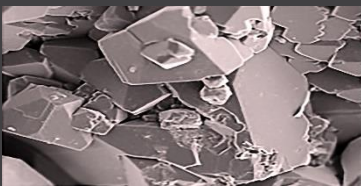
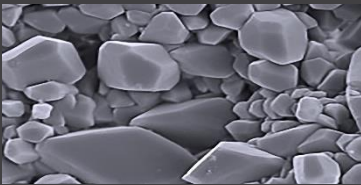
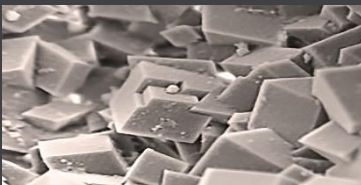




Innovator In Spectroscopy Equipment

PHV2418



**PRECISION HIGH
VOLTAGE $\pm 5KV$ 200 μA
MODEL PHV2418**

www.cfp.co.ir



CATALOG



NIM MODULES



FREE DOWNLOAD

PRECISION HIGH VOLTAGE $\pm 5\text{KV}$ $200\mu\text{A}$ MODEL PHV 2418

Features

- Compact single width NIM package
- Regulated up to $\pm 5000\text{ V}$ dc $200\mu\text{A}$ output for negative and positive separately
- Noise and ripple $\leq 10\text{mV}$ peak to peak
- Overload and short circuit protected
- Overload, inhibit status indicators
- Inhibit and overload latching circuits
- Analog front panel meter
- CFP Instrument Control Bus (optional)
- LAN, USB, RS485 CFP port available



NOISE AND RIPPLE

$\leq 10\text{MV}$ PEAK TO PEAK

ANALOG FRONT PANEL METER

Description

The CFP Model 2418 High Voltage Power Supply is a single-width NIM module designed primarily for use with photomultiplier and electron multiplier tubes. But it can be used with any detector requiring a bias voltage up to 5000 V and a current level of 200 μ A or less. The 2418 allows the user to select from two continuously adjustable outputs, ranging from ± 15 to ± 5000 V dc. The output voltage is measured and displayed by an analog voltmeter. In addition, this unit allows the user to has fully separately positive and negative output voltage polarity. The 2418 unit are fully arc and short circuit protected and will limit continuous short circuit output current to less than 120% of maximum rated output current.

Specifications

Inputs

Input Power

The Model 2418 is powered from a standard NIM Bin and power supply

Inhibit

TTL Logic low or ground inhibits the HV outputs; max logic low ≤ 0.4 V; logic high ≥ 2.5 V

Outputs

HV Output

± 15 to ± 5000 V dc, continuously adjustable, 200 μ A output current

Controls

ON/OFF

Front panel toggle switch enables or disables output

Voltage

Front panel Multi turn controls switch continuous adjustment of the output voltage

Remote Control

Model 2418 have provisions for remote high voltage output control via an USB port.

Indicators

HV Output

Analog panel meter 0 to 5000 V

Inhibit

LED indicates Inhibit status

Overload

LED indicates overload status

Performance

Voltage Regulation

Line : $\pm 0.001\%$ of rated output voltage for a +1% input line change

Load : $\pm 0.001\%$ of rated output voltage for a full load change

Ripple

See 10mVpp table

Stability

$\leq 0.005\%$ per hour, 0.02% per 8 hours, after a $\frac{1}{2}$ hour warm up

other

Humidity

20% to 85% RH, non-condensing

Interface Connector

LAN, USB, RS232, Rs485

Voltage

Front panel Multi turn control switch continuous adjustment of the output voltage

Output Connector

SHV connector

Cooling

Convection cooled

Arc/Short Circuit

All units are fully arc and short circuit protected and will limit continuous short circuit output current to less than 150% of maximum rated output current.

Application

- Aerospace
- Charged Particle Energy Analyzer
- Satellite
- Consumer/industrial
- Air Filtration
- Air Quality Testing
- Dielectric Testing
- Electro-Static Chuck
- Quadruple Mass Spectrometers
- MEDICAL
- Capillary Electrophoresis
- Cell Separation
- Imaging
- Quadruple Mass Spectrometers
- Spectrometry
- Military/defense
- Radiation Detection
- Threat Detection
- Scientific
- Neutrino Telescope
- Cable testing
- Gamma detectors
- Geiger counting
- x-Ray Fluorescence

Typical applications for high voltage power supplies

- Gas discharge tube biasing
- Radiation detection
- Charging particles
- Electrostatic precipitation
- Ozone generation
- Air ionizers

Electrical and Mechanical

Power required

Physical




weight	1506 gr
Dimensions	220 x 34 x 248(mm)
Storage temperature	
Operating temperature	
Extended version	

Software








The device doesn't have any software

Ordering info




Standard package includes

Part #	Image	Description
PHV 2011		PRECISION HIGH VOLTAGE $\pm 5\text{KV}$ $500\mu\text{A}$
ACCE2011001		CD User guide (1 Pack)
ACCE2011002		box with foam insert

Optional accessories and services

Part #	Image	Description
ACCE2418001		BNC terminator 50 Ω
ACCE2418002		RG58A/U , 50 Ω cable with two BNC male plugs
ACCE2418003		RG59 , 50 Ω cable with two SHV male plugs
ACCE2418004		CONN HOUSING plug 50POS AMP CONNECTORS
ACCE2418005		CONN PIN HOOD INT 50POS PANEL MT
ACCE2418006		GUIDE PIN 4-40
ACCE2418007		TE CONNECTIVITY AMP CONNECTORS MULTIMATE, TYPE II SERIES PIN
ACCE2418008		BIN GUIDE PIN
ACCE2418009		GUIDE SOCKET



ACCE2418010		Re-calibration services
ACCE2418011		Installation
ACCE2418012		Training