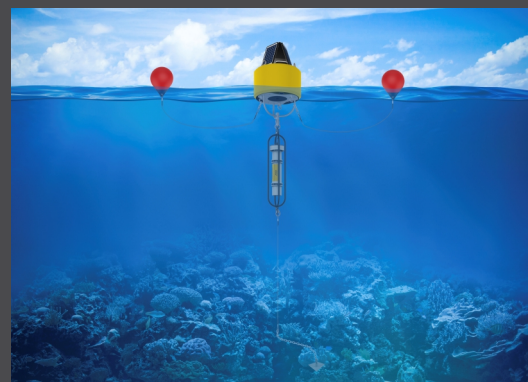
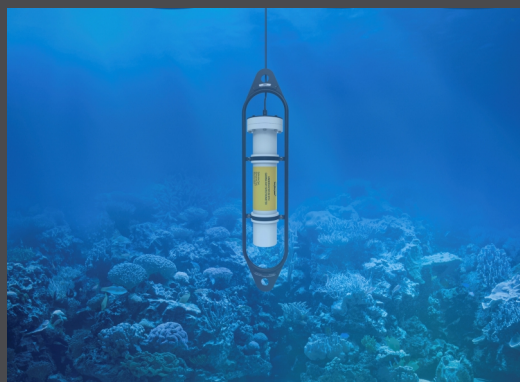
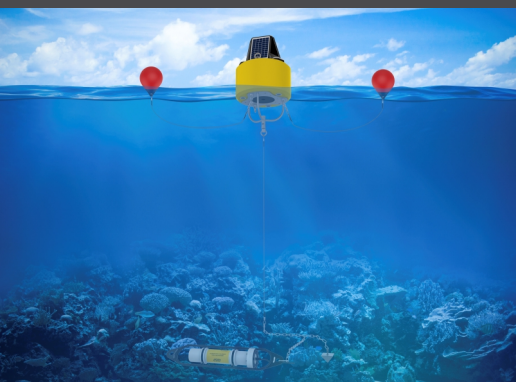
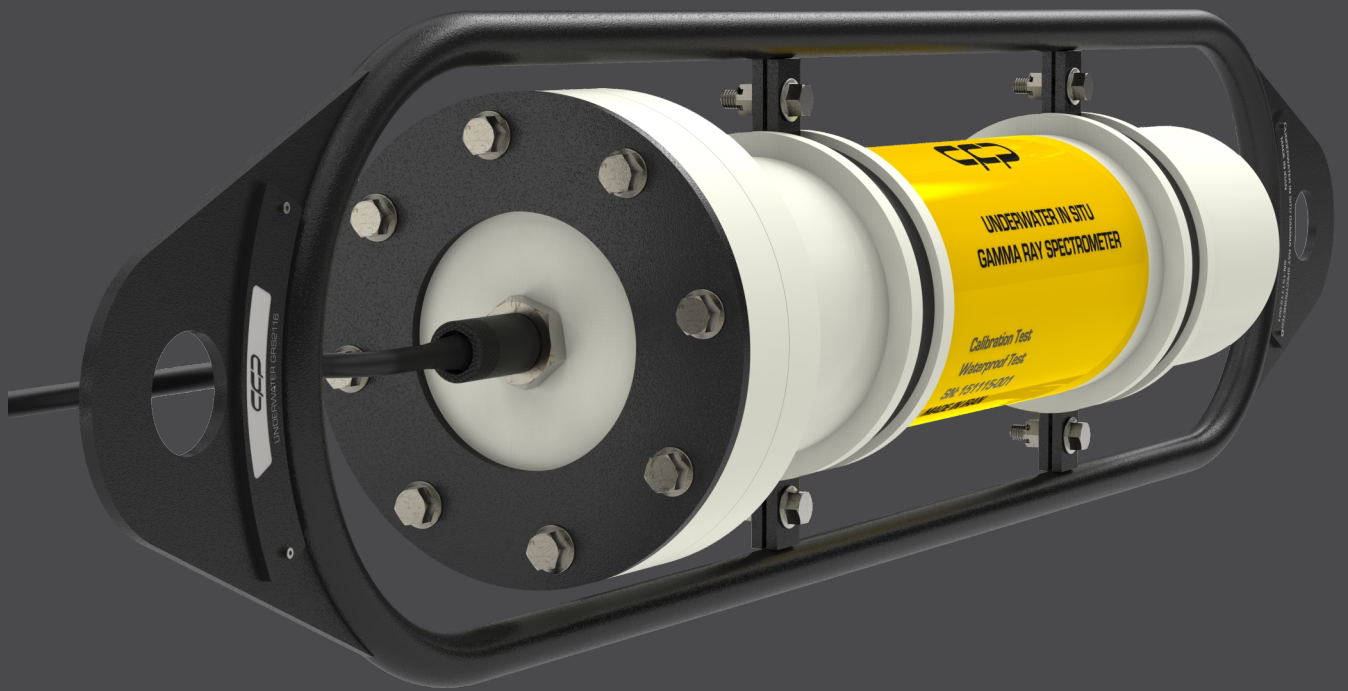




Innovator In Spectroscopy Equipment

UNDERWATER MODEL GRS2116



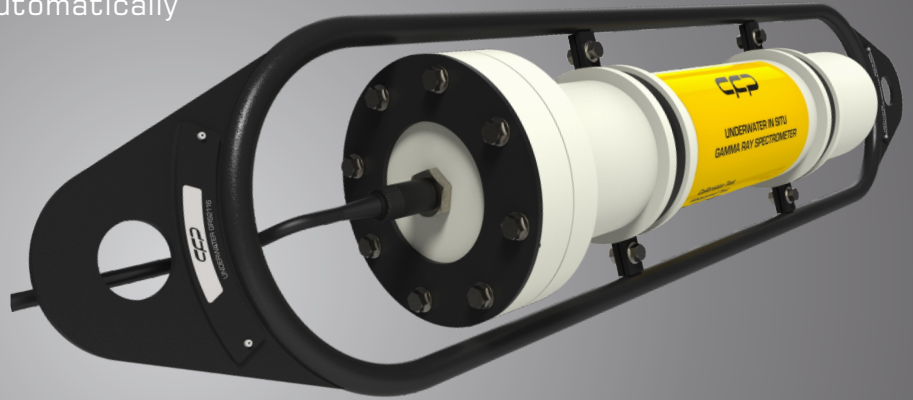


Innovator In Spectroscopy Equipment

UNDERWATER MODEL GRS2116

Features:

- Fast automatic detection of very low artificial radiation
- Continuous acquisition of the gamma spectra between 1~120 minute intervals
- In-situ isotope identification
- Isotope-based alarm management
- LAN interfaces
- Web server for direct data access
- Fully operational in water up to a depth of 500 meters
- Rugged design (IP 68, max. depth 500 m)
- Online spectrum analysis
- Operation under harsh environmental conditions
- Absolute unattended operation
- Easy to maintain - neither consumables nor wear parts
- Easy and quick set up
- Detector verification supported automatically



Description:

- In combination with a PC that displays the readings and provides further analysis, the detector can be used in a wide variety of applications. It can be integrated quite easily into existing monitoring stations. The nuclear spectra that are automatically measured and analyzed in the probe can be uploaded via a LAN interface.
- On the basis of the GRS2116 detector is a self-contained monitoring station with a battery-buffered power supply – either for a mains connection or with solar cells – and with various options for data communication, for example DSL or GPRS.





کنترل فرایند پاسارگاد