

Low Molecular Weight Protein Marker

Description:

Description

The Low Molecular Weight Protein Marker for SDS electrophoresis is a liquid mixture of six purified proteins ranging from 14400 to 97000 Dalton when used in denaturing polyacrylamide, for use in molecular weight estimation in the presence of the detergent sodium dodecyl sulphate (SDS).

Packages and Storage

250 ul 50 lanes
500 ul 100 lanes

* **Store Vials** at -20 °C. To avoid several Freez-thaws, the LMW protein marker should be aliquoted after the first thaw and stored at -20°C. All reagents are stable for up to 24 months under proper storage conditions.

Components:

Phosphorylase b: 50 µg, 97000 (Mr), rabbit muscle (source), Albumin: 50 µg, 66000 (Mr), bovine serum (source), Ovalbumin: 100 µg, 45000 (Mr), chicken egg white (source),

Carbonic anhydrase: 40 µg, 30000 (Mr), bovine erythrocyte (source), Trypsin inhibitor: 37.5 µg, 20100 (Mr), soybean (source), Lysozyme: 50 µg, 14400 (Mr), egg white (source),

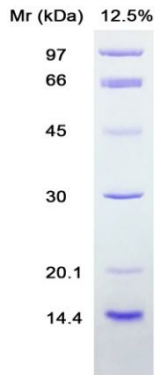


Fig 1. LMW protein marker stained with Coomassie Brilliant Blue. 5 µl of marker (10 µl of sample buffer diluted) were loaded on a 12.5% polyacrylamide gel. The gel was run at a constant current of 120 V for 2 hours on a Bio-Rad mini Protean electrophoresis unit.

Recommendations for loading

1. Thaw the marker at 37 °C for a few minutes.
2. Mix one part of LMW protein marker with one part of 2x sample buffer.
4. Heat this tube at 95 °C for 5 minutes to completely denature proteins.
5. Load the following volumes of the marker on SDS-PAGE:
 - 10 µl per well for mini-gels;
 - 15 µl per well for large gels.
5. If you want to store this sample buffer-diluted marker, chill on ice.
6. Make aliquots and keep them at -20 °C while not in use (additional heating is not required; for next uses, simply thaw the aliquots at 37-40 °C for a few minutes and mix until the solution is homogeneous and clear).

Standard 2x Sample buffer

0.125 M Tris-HCl pH 6.8, 4% SDS, 20% (v/v) glycerol, 2% 2-ME and 0.01% bromophenol blue.