

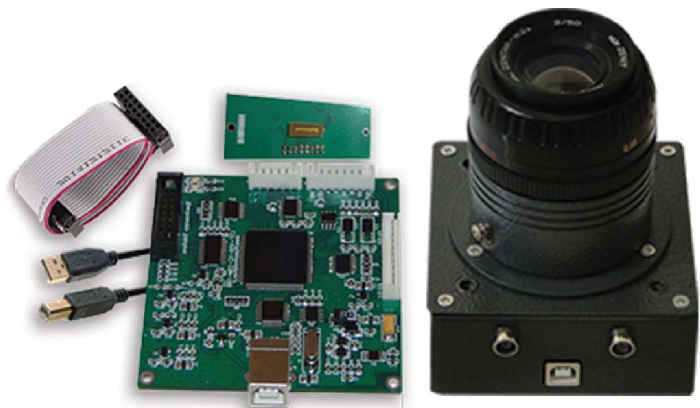
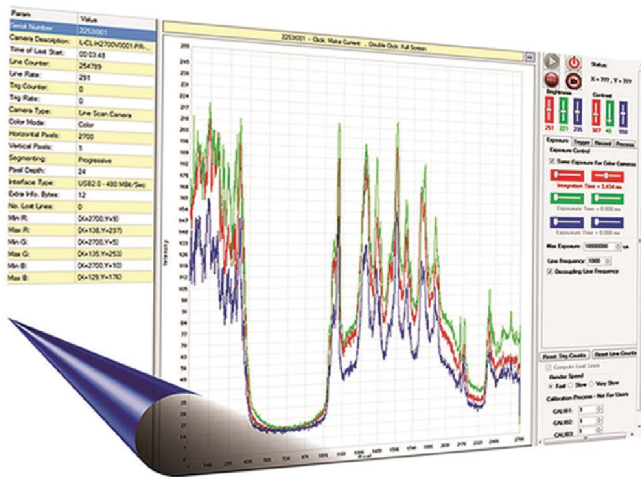
RasaAndishan Moj Pardaz

رساندیشان موج پرداز (دانش بنیان)



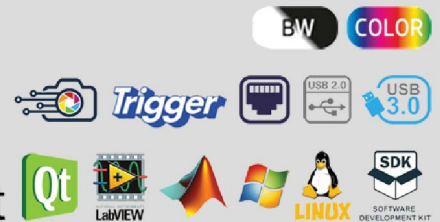
طراح و سازنده انواع آشکارسازهای خطی و دوربین های تصویربرداری

- Robust & Reliable Hardware & Software Architecture
- Multi Interface Connectivity (USB2.0,USB3.0,Ethernet)
- Cross Platform - Linux & windows Application Support
- Plugin Based API and Sophisticated FlowGraph Structure
- VariousSDK(C#,C++,MATLAB,VB.Net,Python,LabVIEW)Included



S - A - K Suffix Cameras are Board Level !
I - P Suffix Cameras are Boxed !

RA-LSC-1402



Overview

RA-LSC-1402 is a USB2.0 Bus Powered Line Scan Camera that incorporates a 256 Pixels CCD array with Pixel Size of 63.5 μm by 55.5 μm on 8 μm center. It is capable of detecting light in the 350 - 1100 nm range.

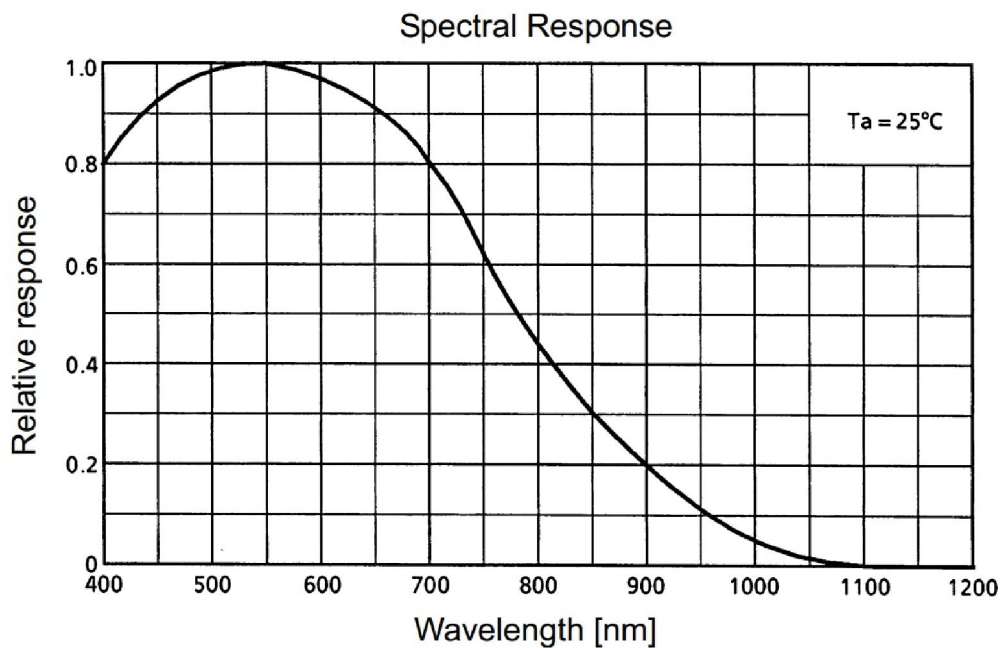
The Line rate of This cost effective monochrome line scan camera is up to 19157 Hz. This camera Supports External Triggering at rate of up to 9578 Hz.

GUI Features

Operates up to 10 Cameras Simultaneously without loss of any data
Cross Platform Software with Auto-Detection of Compatible Cameras
Smoothing, FPN Correction, PRNU Correction, Shading Correction, Background Subtract
Best Responsiveness by Separate Threads of Data Acquisition, Processing and Monitoring
Zooming, Panning, Cursor Definition and OverLayer Mode in Line Scope

Application

RA-LSC-1402 is Designed for Applications in Optics, Imaging, Biology, Industrial Process Control and General Laboratory Use.



Specification

Sensor Spec	
Sensor Type	Monochrome CCD Linear Image Sensor
Spectral Response	350-1100 nm
CCD Pixel Size	63.5 μ m x 55.5 μ m
Pixel Height	55.5 μ m
Pixel Width	63.5 μ m
Effective Pixels	256
Effective Length	256 x 63.5 μ m = 16.256 mm
Max Pixel Frequency	5 MHz
Max Line Rate	19157 Hz @ Free Running Mode
Min Exposure Time	52 μ s
Max Exposure Time	14.5 Min
Exposure Resolution	1 μ s
Pixel Color Depth	16 bit - 65536 Counts
Brightness Coefficient	-/+ 300 mV - 512 Analog Steps
Contrast Coefficient	64V/V - 64 Analog Steps
Triggering Spec	
Trigger Signal	TTL 5 V and 3.3 V
Trigger Mode	Free Running, Software Trigger, Hardware Trigger
Hardware Trig Polarity	Rising Edge, Falling Edge, Both Edges, High Level, Low Level
Trigger Factor	0 To 65535
Exposure Mode in Trig	Up to 4 Different Modes
Max Trigger Rate	9578 Hz
Min Trigger Pulse Length	33 ns
Trigger Delay	0 to 16 Min - in 1 μ s Steps
General Spec	
Interface	High Speed USB 2.0 (480 Mbit/s)
Weight PCB Dimension	42 gr 80 mm x 87 mm x 25 mm
Temperature Range	- 25 to + 60 ($^{\circ}$ C)

رسا اندیشان موج پرداز (دانش بنیان)



حکیمیه، میدان فجر، خیابان خرم، خیابان سحر، کوچه پگاه ۶، پلاک ۱۱، واحد ۷

www.RasaAndishan.ir Info@RasaAndishan.ir ۰۲۱-۷۷۰۱۳۶۸۷