



Table of contents:

Laboratory Drying Oven	14-31
Hot & Cold Incubator	32-55
Co ₂ Incubator	58-67
Constant Climate Chamber & Growth Chamber	70-91
Orbital Shaker	92-99
shaker Incubator	100-115
WaterBath	116-127
Laboratory Chiller	128-135
Electric Muffle Furnaces	138-145
FGlab Software	146-149
Heater Mantle	150-153
PH Meter	154-157



Laboratory oven

The smart ovens BM series, are triple-walled ovens with special benefits. Thermal controller with a wide range of function (300 degrees), high heating rate, incomparable accuracy and HCT unique technology are from the most important benefits of these ovens. The round corners of the inner chamber have given the ovens such beauty and elegance and greatly help the user in cleaning its.

- Mechanical convections: BF55, BF120, BF240, BF400
- Gravity natural convections: BM55, BM120



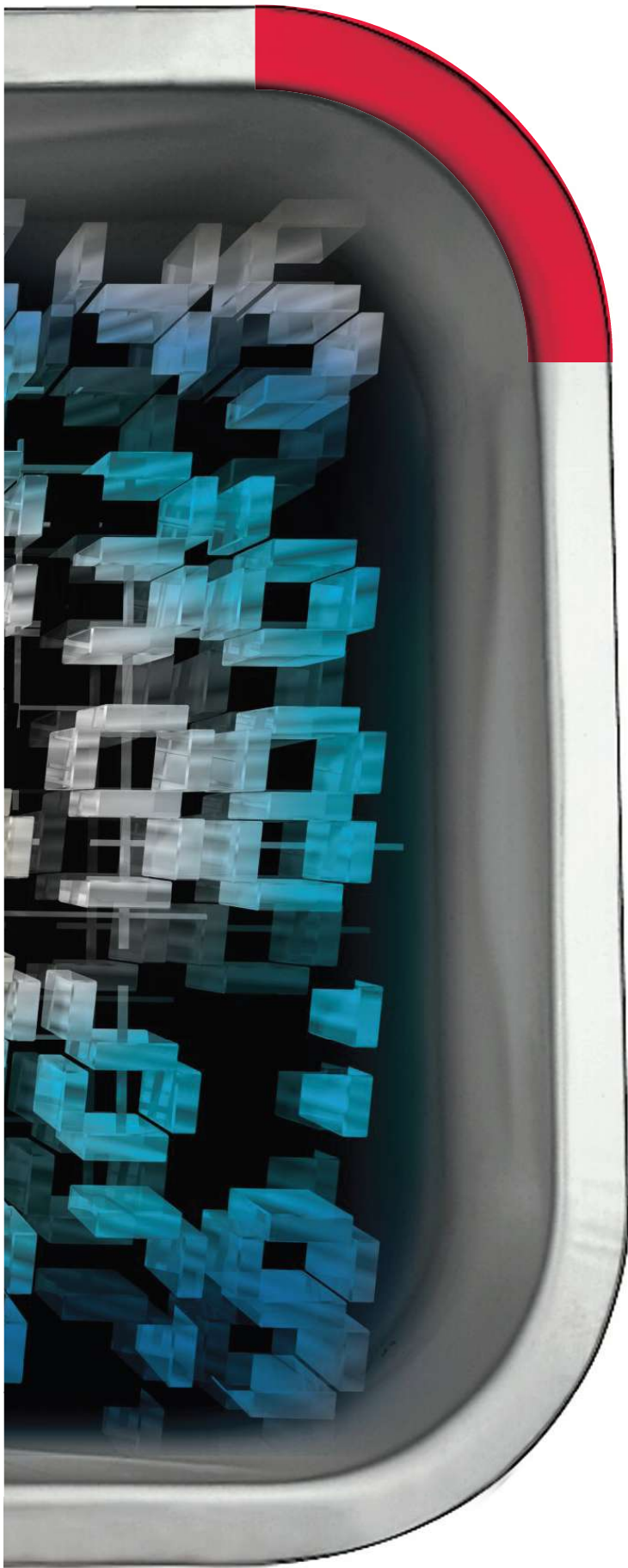
HCT

HCT (Homogenize Chamber Technology):

- High standard according to din 12880 (**Uniformity @27 points**)
- Same test conditions throughout the chamber interior
- Independent of specimen size and quantity
- Triple-walled
- Quick drying

Short warm up time

Up to



Inner chamber:

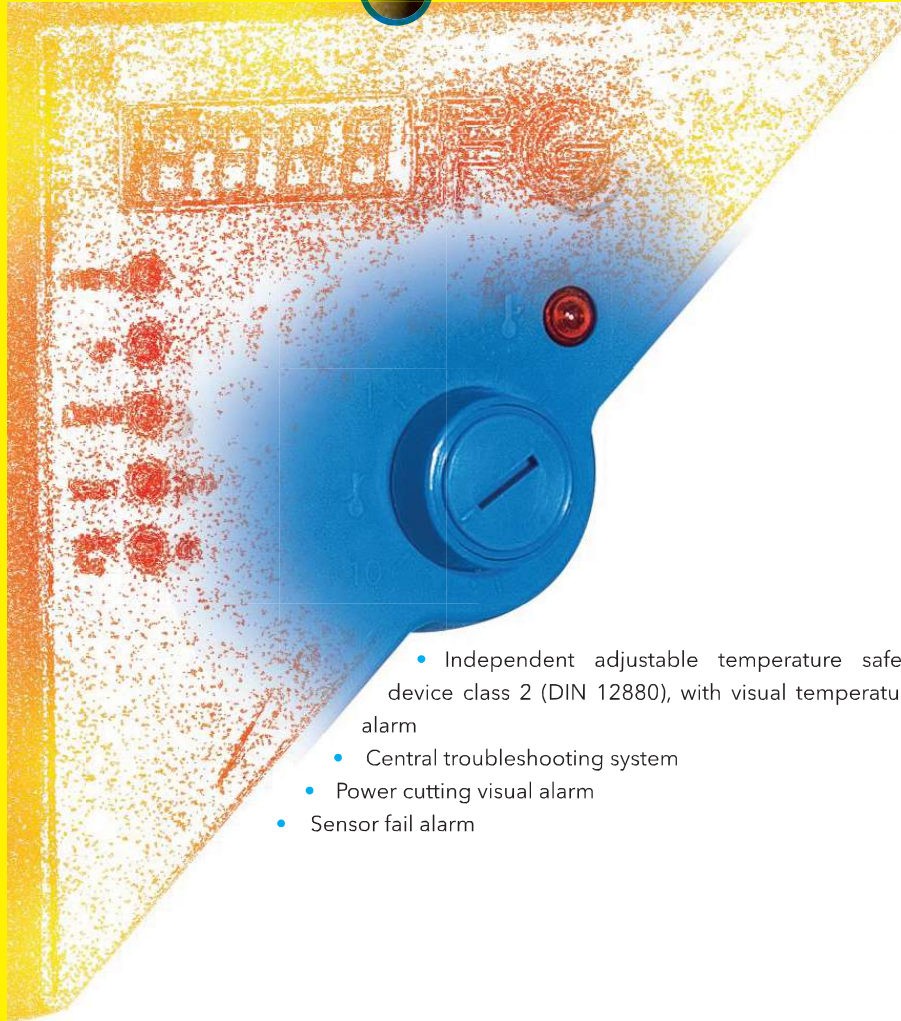
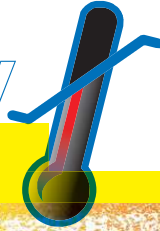
- Easy loading and unloading of specimen material
- Very tight door closure with 2-point door latch
- Low heat dissipation due to 60mm insulation
- Easy cleaning



Microprocessor Controller

- Resolution of display for set point and actual values 0.1 up to 99.9°C and 1°C from 100°C
- User friendly microprocessor controller with advanced timer functions
- **PT100** temperature sensor
- High **accuracy**

Safety



- Independent adjustable temperature safety device class 2 (DIN 12880), with visual temperature alarm
- Central troubleshooting system
- Power cutting visual alarm
- Sensor fail alarm

Drying ovens with gravity convection

Main Features

- Independent, adjustable safety thermostat with visual temperature alarm
- Inner chamber and Heater element container made of stainless steel
- The heater element is embedded in protection stainless steel shield
- Adjustable front ventilation flap slide and rear exhaust Ø50 mm
- External Case Coated with electrostatic powder paint
- Equipped with Error Alarm
- 2 Chrome - plated racks
- Natural convection
- Triple-walled



HCT



BM series E CLASS

Special Benefits

Microprocessor controller

- 999-hours smart timer (permanently operable)
- PID controller with high accuracy
- Central troubleshooting system
- PT 100 temperature sensor
- Wide range : up to 300°C
- Adjustable thermal ramp
- Power cut alarm
- Delay timer

Technology of HCT (Homogenize Chamber Technology)

- Temperature stability and reproducibility
- Highly energy efficiency
- Short warm up times
- Triple-walled
- Quick drying

Outer body

- Specially designed air exhaust port for maximum output of escaping fumes and gases from the rear Exhaust Ø50mm
- Independent, adjustable temperature safety device class2(Din 12880),with visual temperature alarm
- Very tight door closure with 2-point door latch
- Beautiful and ergonomic design

Inner chamber

- Silicon tape around the door resistant to temperatures of up to 330°C
- Easy loading and unloading of specimen material
- Easy access to the element container for cleaning
- Low heat dissipation due to 60 mm insulation
- Rack with tilt protection
- Fully stainless steel
- Easy cleaning

Drying oven with gravity convection

Specifications

Exterior dimensions	BM 55 E	BM 120 E
Width (cm)	64.5	82.5
Height (incl. feet) (cm)	63.5	67.5
Depth (cm)	54.5	68
Depth Plus door handle and connection (cm)	61.5	75
Wall clearance, rear (cm)	10	10
Wall clearance, side (cm)	16	16
Steam space volume	70	147
Exhaust duct (outer Ø cm)	5	5
Number of doors	1	1
Interior dimensions	BM 55 E	BM 120 E
Width (mm)	41	59
Height (mm)	42	45.5
Depth (mm)	32	45.5
Interior volume (l)	55	120
Racks (number standard/max.)	2-(4)	2-(5)
Load per rack (kg)	5	5
Permitted total load (kg)	20	25
Weight (empty) (kg)	41	55
Temperature data	BM 55 E	BM 120 E
Temperature range approx. 15 °C above ambient temperature to (°C)	300	300
Display accuracy @ 70 °C (±K)	0.2	0.2
Display accuracy @ 150 °C (±K)	0.5	0.5
Display accuracy @ 250 °C (±K)	1	1
Temperature variations @ 100 °C (±K)	1	1
Uniformity	BM 55 E	BM 120 E
@ 70 °C (±K)	1.5	2.5
@ 150 °C (±K)	3	3
@ 250 °C (±K)	4	4.5



BM series E CLASS

Heating-up time *	BM55E	BM120E
heating -up time to 70 °C (min)	25	25
heating -up time to 150 °C (min)	35	35
heating -up time to 300 °C (min)	75	70
Recovery time after doors were open for 30 sec *	BM55E	BM120E
@ 70 °C (min)	5	5
@ 150 °C (min)	8	10
@ 300 °C (min)	15	20
Electrical data	BM55E	BM120E
Voltage (V AC)	220	220
Power (W)	1200	1500
Frequency (HZ)	50	50
Current (A)	5.4	6.8

- * To 98% of the set value
- All technical data are specified for units with standard equipment at an ambient temperature of 25 °C and a line voltage fluctuation of $\pm 10\%$. the temperature data is following DIN 12880, respecting the recommended wall clearances of 10% of the height, Width and depth of the inner chamber.



Drying oven with gravity convection

Options

- Access ports of various diameters with silicone plugs
- Analog output for temperature 4-20mA
- Door with window and interior lighting
- Racks, chrome-plated or stainless steel
- Data logger kits and logger software
- Perforated shelf ,stainless steel
- Qualification folder IQ/OQ
- Calibration certificate

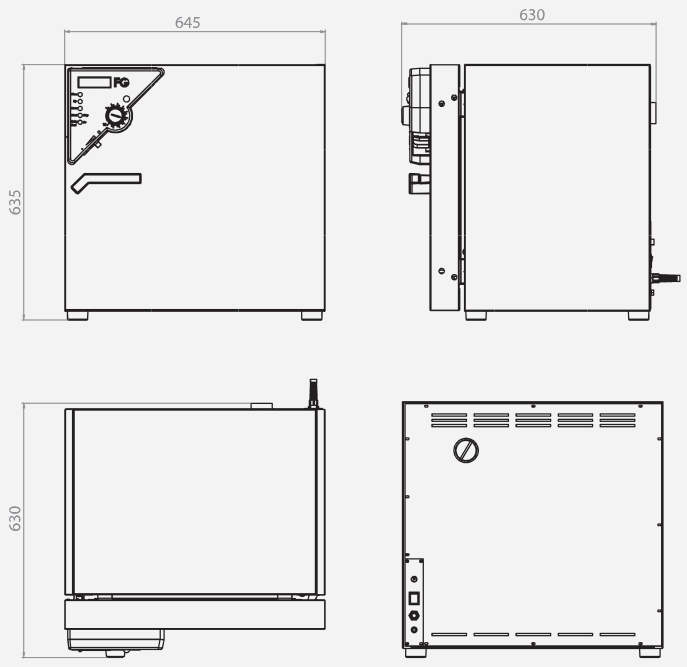
Notes:

- *condensation may occur in the area around the access port*
- *The additional access port input and door with window may affect the temperature behavior*

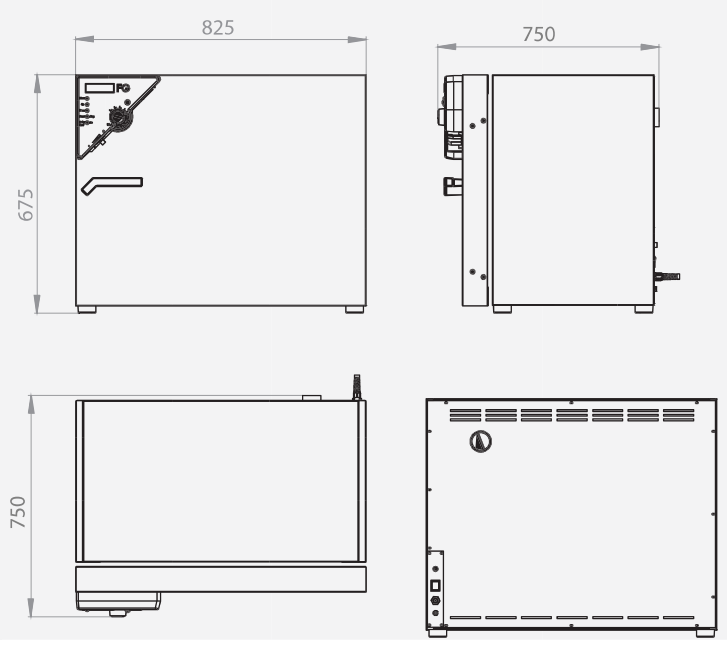


BM series E CLASS

BM55E



BM120E



Drying oven with circulation fan

Main Features

- Independent, adjustable safety thermostat with visual temperature alarm
- Inner chamber and Heater element container made of stainless steel
- The heater element is embedded in protection stainless steel shield
- Adjustable front ventilation flap slide and rear exhaust Ø50 mm
- External Case Coated with electrostatic powder paint
- Equipped with Error Alarm
- 2 Chrome - plated racks
- Circulation fan
- Triple-walled



HCT



Special Benefits

Microprocessor controller

- 999-hours smart timer (permanently operable)
- PID controller with high accuracy
- Central troubleshooting system
- PT 100 temperature sensor
- Wide range : up to 300°C
- Adjustable thermal ramp
- Power cut alarm
- Delay timer

Technology of HCT (Homogenize Chamber Technology)

- Temperature stability and reproducibility
- Highly energy efficiency
- Short warm up times
- Triple-walled
- Quick drying

Outer body

- Specially designed air exhaust port for maximum output of escaping fumes and gases from the rear Exhaust Ø50mm
- Independent, adjustable temperature safety device class2(Din 12880),with visual temperature alarm
- Very tight door closure with 2-point door latch
- Beautiful and ergonomic design

Inner chamber

- Silicon tape around the door resistant to temperatures of up to 330°C
- Easy access to the element container for cleaning
- Easy loading and unloading of specimen material
- Low heat dissipation due to 60 mm insulation
- Rack with tilt protection
- Fully stainless steel
- Easy cleaning

Drying oven with circulation fan

Specifications

Exterior dimensions	BF55E	BF120E	BF240E	BF400E
Width (cm)	64.5	82.5	107.5	129.5
Height (incl. feet) (cm)	63.5	67.5	84	103.5
Depth (cm)	54.5	68	69	69
Depth plus door handle and connection (cm)	61.5	75	76	76
Wall clearance, rear (cm)	10	10	10	10
Wall clearance, side (cm)	16	16	16	16
Steam space volume	70	147	277	277
Exhaust duct (outer Ø cm)	5	5	5	5
Number of doors	1	1	2	2
Interior dimensions	BF55E	BF120E	BF240E	BF400E
Width (mm)	41	59	84	106
Height (mm)	42	45.5	62	80
Depth (mm)	32	45.5	46.5	46.5
Interior volume (l)	55	120	240	400
Racks (number standard/max.)	2-(4)	2-(5)	2-(7)	2-(9)
Load per rack (kg)	5	5	5	5
Permitted total load (kg)	20	25	35	45
Weight (empty) (kg)	44	62	96	145
Temperature data	BF55E	BF120E	BF240E	BF400E
Temperature range approx. 15 °C above ambient temperature to (°C)	300	300	300	300
Display accuracy @ 70 °C (±K)	0.2	0.2	0.2	±0.2
Display accuracy @ 150 °C (±K)	0.5	0.5	0.5	0.5
Display accuracy @ 250 °C (±K)	1	1	1	1
Temperature variations @ 100 °C (±K)	0.5	0.5	0.5	0.5
Uniformity	BF55E	BF120E	BF240E	BF400E
@ 70 °C (±K)	1	1	2	2
@ 150 °C (±K)	1.5	1.5	2.5	2.5
@ 250 °C (±K)	2.5	2.5	3.5	3.5



BF series E CLASS

Heating-up time *	BF55E	BF120E	BF240E	BF400E
heating -up time to 70 °C (min)	15	15	17	25
heating -up time to 150 °C (min)	27	30	30	40
heating -up time to 300 °C (min)	60	60	60	70
Recovery time after doors were open for 30 sec *	BF55E	BF120E	BF240E	BF400E
@ 70 °C (min)	3	3	3	4
@ 150 °C (min)	5	6	7	15
@ 300 °C (min)	10	15	15	25
Electrical data	BF55E	BF120E	BF240E	BF400E
Voltage (V AC)	220	220	220	220
Power (W)	1320	1600	2350	3100
Frequency (HZ)	50	50	50	50
Current (A)	6	7.2	10.7	14

* To 98% of the set value
 • All technical data are specified for units with standard equipment at an ambient temperature of 25 °C and a line voltage fluctuation of ±10%.the temperature data is following DIN 12880, respecting the recommended wall clearances of 10% of the height, Width and depth of the inner chamber.



Drying oven with circulation fan

Options

- Access ports of various diameters with silicone plugs
- Analog output for temperature 4-20mA
- Door with window and interior lighting
- Racks, chrome-plated or stainless steel
- Data logger kits and logger software
- Perforated shelf ,stainless steel
- Qualification folder IQ/OQ
- Calibration certificate

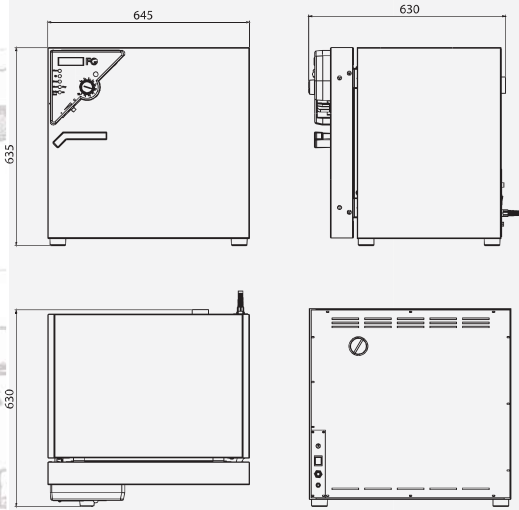
Notes:

- *condensation may occur in the area around the access port*
- *The additional access port input and door with window may affect the temperature behavior*

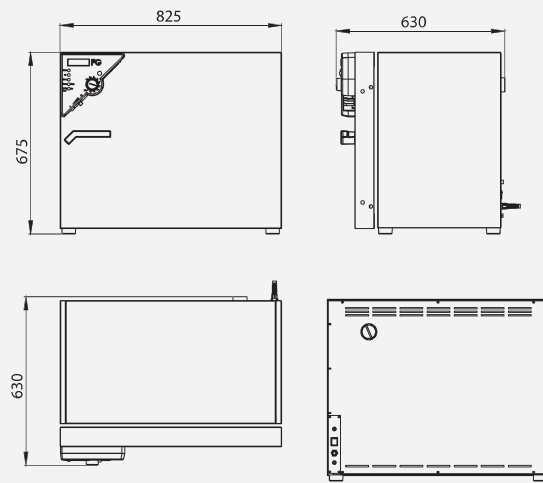


BF
series
E CLASS

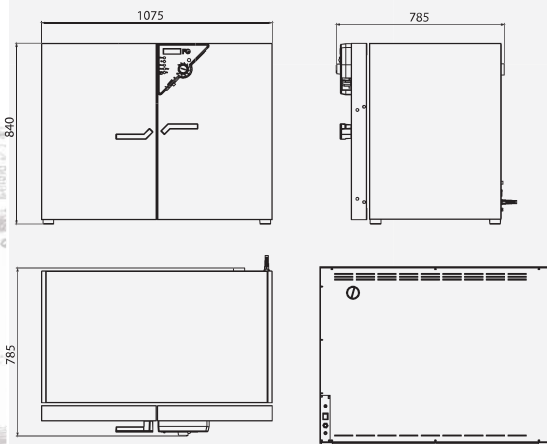
BF55E



BF120E



BF240E



BF400E

