

# گاز کروماتوگراف (GC)

گاز کروماتوگراف GPT-2560 یکی از بهترین انتخاب جهت آنالیز مواد شیمیایی برای منظور آموزشی و حرفه ای تک منظوره میباشد این دستگاه با استفاده از دقیق ترین سیستم الکترونیکی کنترل گاز و دما دقیق ترین آنالیز کمی و کیفی را انجام میدهد و مزیت برتر آن سیستم یکپارچه اینجکتور، ستون و دکتور میباشد



## GPT – 2560

**سبک و کوچک و قابل حمل**

**نصب و راهبری سریع و آسان**

### Performance

High speed High resolution, High reproducibility, High quality and High sensitive TCD detector

Low dead volume inlet – for packed column

Accurate and high performance isothermal oven (up to 400 °C)

Full EPC high resolution gas control

User friendly software

Dimension: 27-38.5-26.6 cm (X-Y-Z)

Weight: 14.5 ~ 15.5 Kg

### کاربرد دستگاه

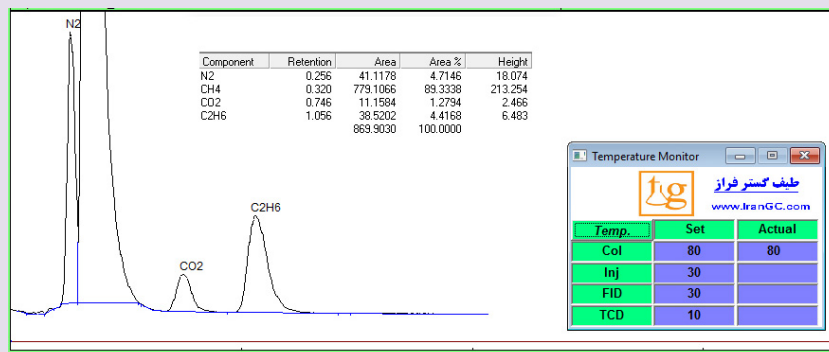
آزمایشگاه های آموزشی و تحقیقاتی شیمی

نفت و پتروشیمی

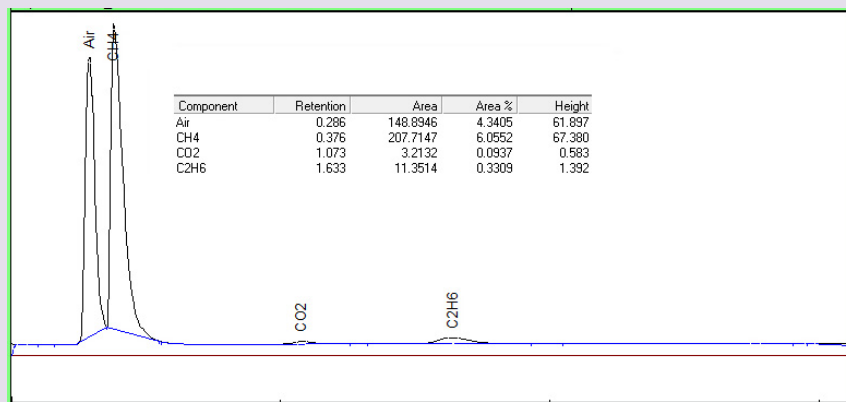
محیط زیست

صنایع شیمیایی

تحقیقات علمی



Temp.	Set	Actual
Col	80	80
Inj	30	
FID	30	
TCD	10	



### About GPT-2560

GP series are compact and portable gas chromatography that all the injector, column oven and detector is assembled in compact module for easy operation and cheap GC for training or single task professional purpose for university student or research or quality control in industrial laboratories.

GPT-2560 is portable GC equipped with 4 filament high sensitive and low noise TCD GPT-2560 analytical module has pre installed packed column normally 6 feet 1/8 inch ID steel column packed with Porapack Q, N, Molecular Sieve 5A, SE-30 or customer order column. GPT-2560 is really plug and play GC and it need only carrier gas and a lap top and is very easy operation instrument and has user friendly software.

Other alternative GP series is GPF series that equipped with FID.

تهران - کیلومتر ۱۹ جاده قدیم کرج - بلوار تولیدگران - پلاک ۱۸۳ - ساختمان اداری مهتاب - واحد ۴

تلفن: ۰۲۱ ۴۴۳۳۶۶۷۲ - ۴۶۸۲۵۵۸۴ - فاکس: ۰۲۱ ۴۶۸۲۵۵۸۳۵ - کد پستی: ۳۱۱۴۸۵۹۰۱۸ - E mail: [info@irangc.com](mailto:info@irangc.com)

## Chromatography software

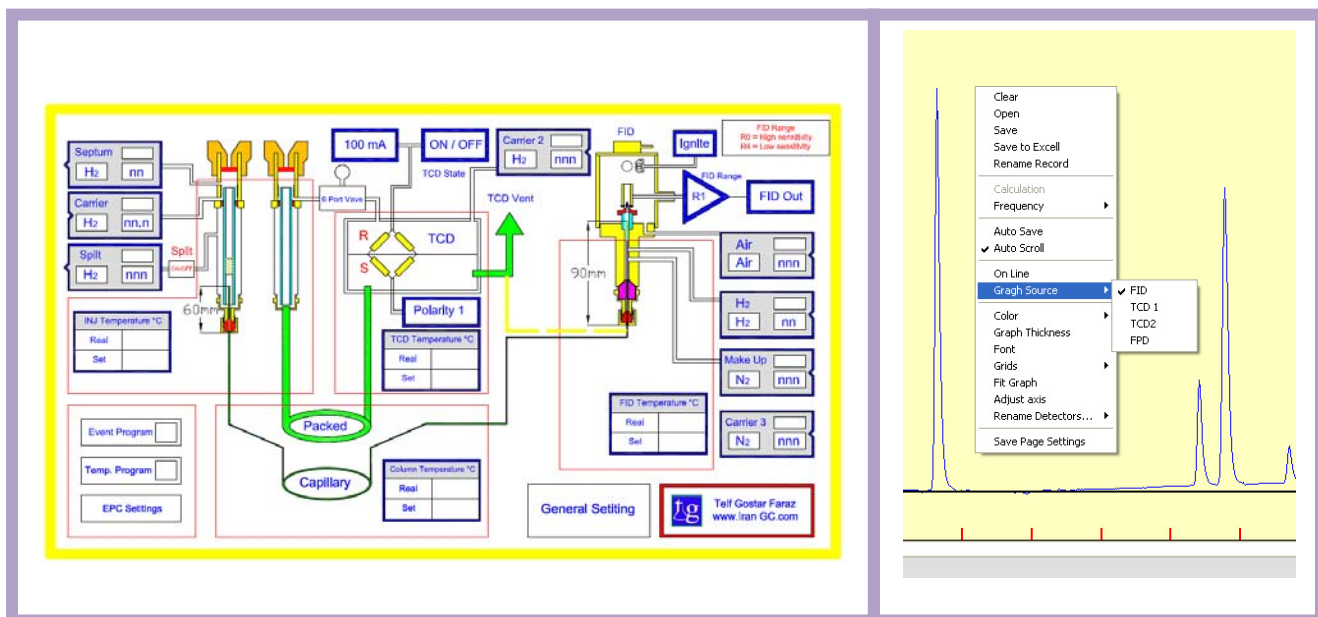
Designed very user friendly and schematically, it control all GC modules and do data acquisition of all temperature, gas parameter and chromatography data.

The software does all data processing and calculation that will be needed for professional calibration and determination of chromatography analyses and result.

### GPT – 2560 Specification

Parameter	Range	Comment
Oven Temperature	Ambient ~ 400 ° C	Isothermal Dual PID control
Inj – Det Temperature	Ambient ~ 400 ° C	Compact Dual PID control
Injector	Packed	1 Port
Injection mode	Manual - Online	By multi port Valve (option)
Multiple Injection	Online by 10 port valve	Back flush pre Column (Option)
Detector	TCD	4 Filament
TCD filament	4 filament	Rhenium - Tungsten
Gas control	EPC	All Chanel EPC
Power	220 V AC – 0.8 KW	No need stabilizer
Dimension	27 X 26.6 X 38.5	W X H X D
Weight	14.5 ~ 15.5	Kg depend on set up
Gross weight	15 ~ 16	Kg

WWW.IRANGC.COM



The image displays two parts of the chromatography software interface. On the left is a detailed schematic diagram of the GC system, including components like the Septum, Carrier, Split, Inj Temperature, TCD, FID, and various gas flow controls (Carrier 1, 2, 3, Air, N2, Make Up). It also shows temperature settings for the TCD and FID. On the right is a screenshot of the software's menu system, showing options like 'Clear', 'Open', 'Save', 'Auto Scroll', and 'Graph Source' with a sub-menu for selecting the detector (FID, TCD 1, TCD 2, FFD).