

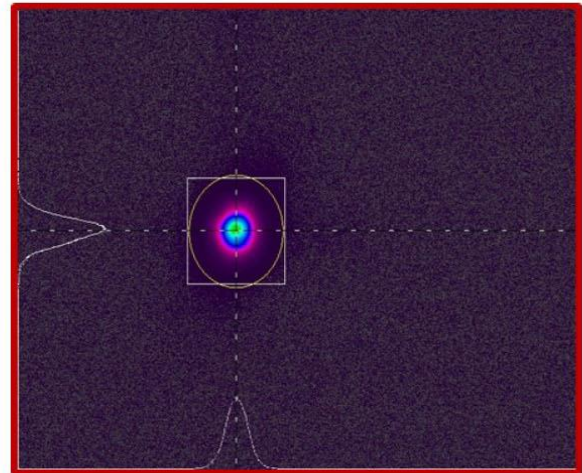
High Power CW 532 nm DPSS Lasers

This laser is a compact, modular, diode-pumped solid-state (DPSS) laser providing up to 2 Watts continuous-wave (CW) power at 532nm in a near-perfect TEM00 mode with excellent long-term stability.



Features

- Compact laser head
- Excellent long-term power stability over 24 hours
- compact power supply
- good beam quality



Applications

- Ophthalmology
- Flow cytometry
- Spectroscopy
- Eye and CCD saturation
- illumination

Specifications

- Type of Laser: Diode-Pumped Solid-State
- Mode of operation: CW
- Average output power: > 5 W
- Wavelength: 532 nm
- Beam quality (M2): < 1.5
- Beam Diameter: 2 mm before beam expander
- Beam Divergence: 2 mrad before beam expander
- Cooling Method: Water Cooling
- Operating Voltage: 220 VAC, 50 Hz
- Power Consumption Max: 400 W

301 Bldg, 10th Street, Isfahan Science and Technology Town, Isfahan, Iran

03133931398

03133931096

novinlasersaba@gmail.com

+989136025531