



Innovator In Spectroscopy Equipment

LGS2515-2.5"



LAB GAMMA SPECTROSCOPT SYSTEM MODEL LGS2515-2.5"

www.cfp.co.ir



CATALOG



SPECTROMETER



FREE DOWNLOAD

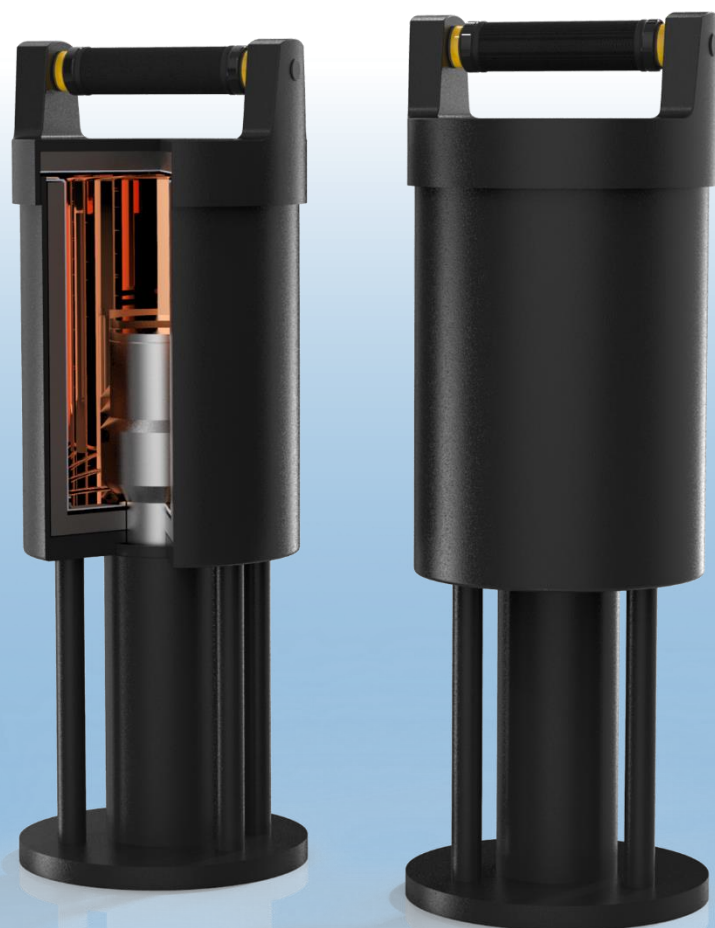
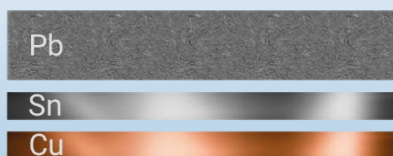
LAB GAMMA SPECTROSCOPT SYSTEM MODEL LGS2515-2.5"

Features

- Efficient 2.5" NaI(Tl) scintillator probes
- Closed measuring chamber with scintillation detector
- 4 Different energy ranges (adjustable digital gain)
- 4096 channels spectrum presentation
- Supports all data extraction and reanalysis data
- Simultaneous and separate measurement
- High sensitivity and uniform response
- Low limits of detection and decision
- Documentation of measured values
- Wide temperature range

FAST AND ACCURATE GAMMA SPECTROSCOPY BASED ON CUSTOMIZED SHIELD DESIGN

X- and Gamma-Rays Low Background Shield



Description

LGS2515-2.5" is a well-shielded gamma activity measurement system offering gamma spectrum calculations in the sample. The system can be utilized in various applications including environmental analysis, food samples and nuclear medicine. The device is equipped with a 2.5" NaI(Tl) detector which leads to impressively high spectrum resolution. The holder considered for the sample comes with two versions. In the first version, the shield comprises 3 layers including copper, tin and lead from interior to exterior, respectively. The second version is similar while tin layer has been excluded. The overall dimension of the system is 562.4mm height and 200mm diameter while the cavity for sample holder has diameter of 148mm and depth of 219mm. Using modern digital signal processing algorithms, the usbBase can accurately detect the pulses corresponding to gamma radiation with low dead time. It is easy to operate and provides quick and reliable measurement results. The instrument is ideally suited for nuclide-specific activity measurements in the radionuclide laboratory. The measurement electronics is a modular designed system including a high voltage unit with preamplifier and an ADC for the acquisition of spectra. The measurement electronics LGS2515-2.5" is operated via PC software. This allows very intuitive user guidance. Pulse height spectra can be depicted graphically and evaluated. Several service functions are available including background measurement, energy calibration and spectrum recording.

Specifications

Inputs/outputs

Inputs

USB

Outputs

USB

Shield Properties

Materials and Thickness

Copper, Tin, Lead (version 1) – 2mm,1mm,13mm respectively
Copper, Lead (version 2) – 2mm,13mm respectively

Cavity

219mm x 148mm (Depth x Diameter)

Background Measurement (Background is measured with closed shield opening)

Gamma

60CPS (with shield)

Detector

Gamma Detector

NaI(Tl), 2.5"

PMT

14-pin 10-stage PMTs

Data Acquisition and Analysis

OS Requirement

Windows 7 or higher versions

Software

CFP-DMCA software

Measurement/Spectrum

High Voltage

0-2000V, Positive, 12 Bit resolution

Energy Calibration

Linear calibration

ROI Selection

4 ROIs to select on store

Spectrum Type

2 simultaneous cumulative spectrums

ADC

Channels

12bit in 4096CH @120Mhz FRQ

Conversion time

200nsec with

8.3nsec time interval

Digital Signal Processing

12-bit and 80 MHz ADC

Software selectable coarse gain: (x1 to 150x) in 15 step

Software selectable fine gain: (0 - 2x) in 65536 step

Integration time filter for the energy calculation with software adjustable rise time in the range 0 to 0.819ms @80Mhz in 0-65536 step

Trigger threshold software adjustment (0 to 100% scale) in 1024 step

Software fine tuning of the Pole-Zero cancellation

Software gain stabilization

Pile-up rejection and Live Time correction

Baseline restorer with programmable averaging

Application

- Nuclear medicine
- In-vitro test
- Radio-immunoassay and analysis of environmental samples
- Food samples inspection
- Mining and mineral analysis

Electrical and Mechanical

Power required

USB port - DC – 5V- 200mA (1W)

Physical

Dimensions	562.4mmx200mm (Height x Diameter)
Weight	36.40kg (3 Layers) 35.15kg (2 Layers)
Storage temperature	0°C to 50°C
Operating temperature	10°C to 45°C.

Software

DMCA software containing fast access toolbar, menu bar, and different panels including new gamma histogram, gamma trace and state info.

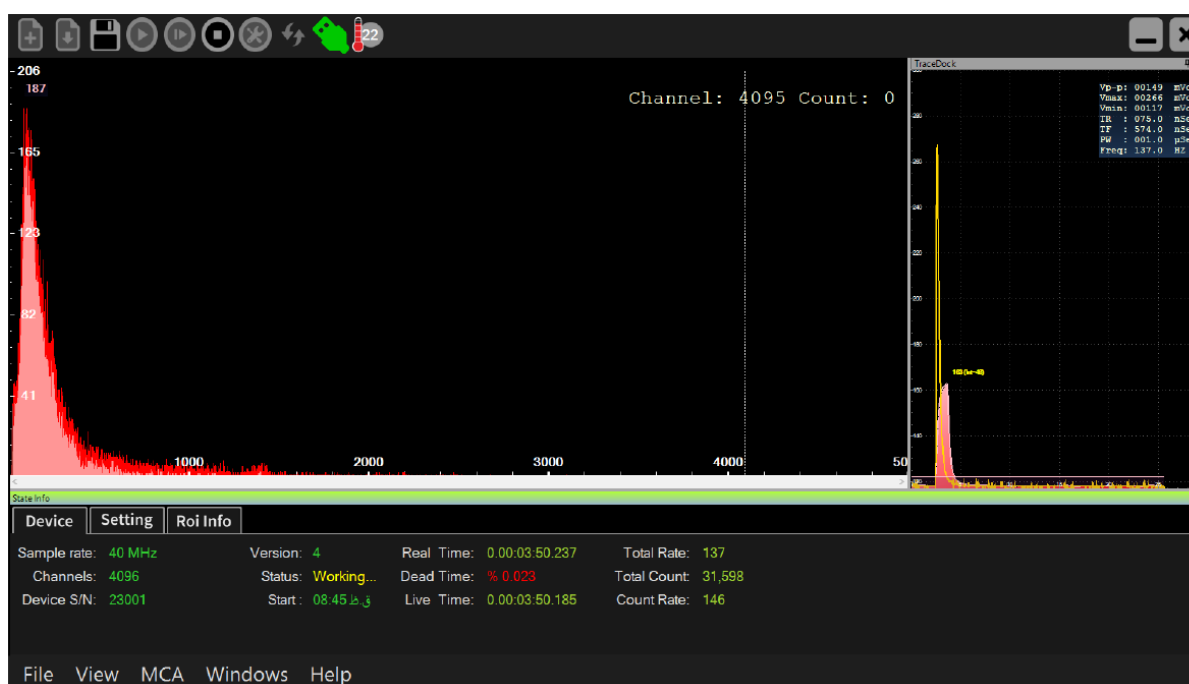
Fast access toolbar provide several functionalities usually used by user.

New gamma histogram panel represents the gamma spectrum in real-time manner.

Gamma trace panel shows the gamma pulses sensed by detector.

State info panel shows some information of detector parameters along with real time measurement results.

Menu bar shows the total command needed throughout the device functioning.



Software main window

Ordering info

Standard package includes Version 1 (3 Layers Shield)

Part #	Image	Description
LGS2515-2.5" main (Ver1)		Includes the main body of device (Detection system, linear stage, integrated display)
ACCE2515001-2.5"		CD User guide (1 Pack)

Standard package includes Version 2 (2 Layers Shield)

Part #	Image	Description
LGS2515-2.5" main (Ver2)		Includes the main body of device (Detection system, linear stage, integrated display)
ACCE2515001-2.5"		CD User guide (1 Pack)

Optional accessories and services

Part #	Image	Description
ACCE2515002-2.5"		installation
ACCE2515003-2.5"		Training
ACCE2515004-2.5"		Hard case with foam insert



Innovator in Spectroscopy Equipment



Unit 10, No 64, Vahedi
(7) St, After Punak Sq,
Ashrafi Esfahani Expy,
Tehran, Iran



+98 (21) 46045383

w w w . c f p . c o . i r