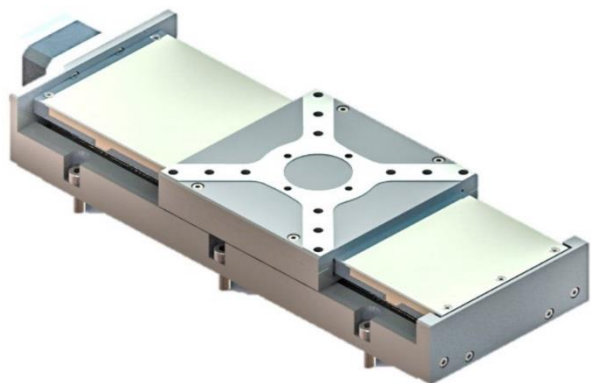


Micro-Positioning Product Line

Precision Motorized Linear Stages



MMX Series

- ❖ Compact Design, 42mm Height
- ❖ Travel Range from 50 to 150 mm
- ❖ Microstep Driver
- ❖ User friendly computer interface
- ❖ Optional 5-phase Stepping motor for better resolution and smoother motion
- ❖ Integrated limit switch and home sensor
- ❖ Modular X,Y,Z Configurations Available
- ❖ Rigid Structure, High load Capacity
- ❖ Available in High Accuracy (MMXH) and Precision (MMXP) Versions

Tarfand Precision Motorized Linear Stages are designed to facilities high precision position control via computer. User can easily command the stage via custom LabVIEW, MATLAB and C++ Programs. The Driver, software and sample programs are included in the product package.

Specifications

	Unit	MMXH050/ 100/ 150	MMXP050/ 100/ 150
Motion and positioning			
Active axes		X	X
Travel Range	mm	50/ 100/ 150	50/ 100/ 150
Resolution*	μm	0.625	0.250
Unidirectional Repeatability	μm	5	2
Backlash	μm	<8	<1
Max. Speed	mm/s	40	20
Straightness / Flatness	μm	±10	±10
Mechanical properties			
Thrust Force	N	100	100
Load capacity, Horizontal	N	500	500
Drive properties			
Motor Type		2-Phase Stepping	5-Phase Stepping
Drive Type		Precision Rolled Ballscrew	Precision Ground Ballscrew
Guide Type		Recirculating Ball Bearing	Recirculating Ball Bearing
Miscellaneous			
Operating temperature range	°C	0 to 50	-20 to 50
Material		Aluminum	Aluminum
Mass	kg	2.0/ 2.5/ 3.0	2.0/ 2.5/ 3.0
Driver Cable length	m	2.0	2.0

* Drive mode: 1/8 microstep

Drawings / Images

