

Western Blot Protein Marker (25-90 kDa)

Cat. No. KM201

Storage: at -20°C for two years

Description

Western blot protein marker is composed of eight proteins ranging from 25 kDa to 90 kDa. Protein bands of 25 kDa, 45 kDa and 85 kDa are prestained allowing easy identification and monitoring of your proteins during electrophoresis and membrane transfer.

Other five proteins contain several IgG binding sites, allowing marker visualization using the same reagents and protocol for your target proteins. These no-dye detached proteins result in more accurate molecular weight estimation.

- Prestained bands for monitoring electrophoresis and membrane transfer.
- Visualizing molecular weight marker on western blots with the commonly used immuno-detection methods.
- Ready-to-use format, no heating and reductant are required.

Advantages

- When using chemiluminescent detection by alkaline phosphatase- or horseradish peroxidase-based system, the protein molecular weight standard bands (25 kDa, 40 kDa, 60 kDa, 75 kDa and 90 kDa) are displayed.
- Accurate identification of protein molecular weight, without need of labeling and comparison with protein standard bands.
- Western Marker provides accurate protein molecular weight, due to no label and no dye detached.
- Ready-to-use format, no heating and reductant agents are required.

Storage buffer

125 mM Tris-HCl (pH 6.8), 5 mM EDTA, 10 mM DTT, 17.4% glycerol, 3% SDS, 0.01 % phenol red

Instruction for Use

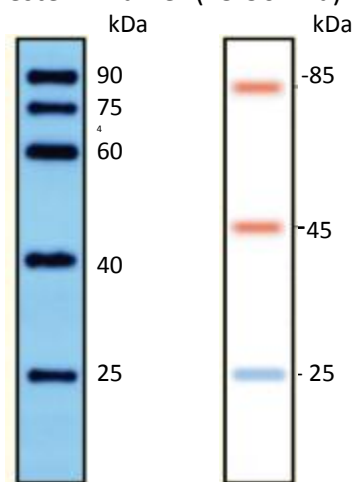
- It is in a ready-to-use format without heating and reducing agent.
- Completely thaw and mix well before use and use the following volumes of the ladder on 10% Tris-glycine SDS gel:

5 μ l per well for mini gel; 10 μ l per well for large gel.

Electrophoresis condition

BioRad Mini Electrophoresis installation and transfer system. Electrophoresis at 200 V for 50 minutes, transfer membrane at 200 mA for 2-3 hours.

Western Marker (25-90 kDa)



FOR RESEARCH USE ONLY